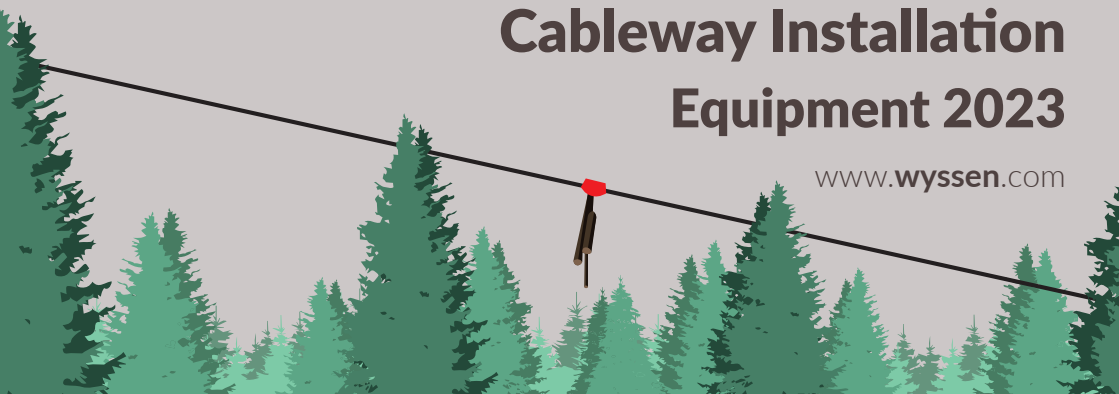




# Cableway Installation Equipment 2023

[www.wyszen.com](http://www.wyszen.com)



## Contents

4	Cable deflection rollers	28	Clamps
6	Cable snatch blocks	30	Shackles
	especially for rear cable winches	31	Aluminium anchor roller for shackles
6	Triple Pulley Blocks with mounting bracket	32	Oval ring
7	Automatic cable deflection roller	32	Wyssen plate clamp
7	Mainline idler pulley	33	Anchoring clamp
7	Double deflection roller	34	Ackja cable winch
8	Cable carrier with brake	34	Maasdam cable puller
8	Traversable cable carriers	35	Habegger Hit wire rope hoist
9	Terminal mast block with clamp	36	Mainline for Habegger manually operated wire rope hoist
9	Clamp for terminal mast block	37	Habegger Hit-Trac power-driven hoists
10	Spar tree saddle	37	Traction cable for Habegger power-driven hoists
11	Support saddles	40	Small Cableway 100 kg
12	Skyline support saddle type 2.5	41	Wyssen sheave block
12	Skyline support saddle type 5	42	Automatic skyline clamp
13	Special shakles	44	Electronic tension measurement device Wyssen
13	Accessories for the skyline support saddle	45	PIAB tension measurement device
14	Mainline cable pulley blocks	45	Wyssen compass
14	Curve saddle type 5 (modular)	46	Skymule Plantation Cableway
15	Support balances	48	Inclinometer
16	DQT-Support material	48	Topochaix terrain measurement device
16	DQT-Support elements	48	Multi-tree anchor
16	Single DQT support	49	Cable tensioner
16	Double DQT support	49	Rock anchor plate
17	Triple DQT support	50	Accessories for the rock anchor plate
17	A-DQT-supports	50	Wyssen titanium anchor
17	Screw / Washer / Nut	51	Anchor bracket staple with cross-plateanchors
18	Cable slings	51	Anchor brackets for concrete anchors
19	Choker ring	52	Anchor brackets for automatic skyline clamp
19	Choker slings	52	Rotatable anchor
20	Cable sling with sliding hook	52	Wire rope cutter
20	Pre-fabricated steel wire cables	53	Splicing tool
20	Sling hooks (cable lock, slide)	54	Angle grinder
21	Wire rope slings	55	Wyssen safety belt
22	Anchoring cables	55	Wyssen climbing spikes
23	Cable reels	56	Icom Radio Telephone
23	Cable capacities of the cable reels	57	Motorola Radio Telephone
24	Cable spool drive	58	Headphones and microphone for radio
25	Cable spool jack	58	Wyssen fan articles
25	Shafts and sleeves	59	Orders
26	Foot-operated winch		
26	Wyssen automatic clamp		
27	Wyssen automatic clamp (two attachment bolts)		
27	Bugnard cable tensioning clamp		
28	Crosby wedge socket		

**Prices are subject to change!**

Due to the uncertain economic situation, prices may have to be adjusted to the current market situation.

## Programm overview

Wyssen Seilbahnen AG, Inventor of the skyline crane. Your partner with almost 100 years of experience in material cableways, skyline cranes and cable cranes.



### Services

We offer you the necessary services such as consulting, project planning, sales, training enrolment and after-sales support. Our highly-motivated and experienced staff is at your service.

### Products

Our high-quality products include cable winches, carriages, self-propelling material single-line cableways, circulating cableways and skyline crane accessories for the highest demands and with long service life. Spare parts are available from stock.

### Spare parts

We offer everything related to material cableways: the complete equipment from cable to cable winches, from carriages to accessories for assembling and operation.

### We offer

Highest quality, functionality, reliability, operational safety and ease of operation are the characteristics of our "Made in Switzerland" products.



## Cable deflection rollers

The high quality Wyssen cable deflection rollers have been specially developed for skyline crane construction and operation, but today they are used for all types of hoisting and ground traction work. All our cable deflection rollers have a safety factor of 5. The models made of steel are particularly suitable for fast-running cables with a high load. The blocks made of aluminium/ plastic are on account of their light weight ideally suitable for assembly work (for manual operation only). The permanently lubricated ball-bearings and the high-strength materials guarantee a long service life. The rollers are equipped with cable derailment guards, so that derailing or any damage to the wire cable is not possible.

The deflection rollers can be opened up in a hanging position on slings and the cable can be simply inserted. Various models are available in a wide range, so that e.g. sleeves or cable connections can be drawn through when threading the cable. Individual spares are available for all rollers.

We will be pleased to offer you more rollers on request.



Art. No.	Roller- $\varnothing$ version	Material Plate Roller	Max. traction on the bolt	Max. cable pull at 180°	Cable- $\varnothing$ up to Max. width	Weight	CHF	EUR
34.700	$\varnothing$ 100 mm Standard	Steel Steel	3'200 kg	1'600 kg	$\varnothing$ 26 mm 27 mm	2.74 kg	359.00	359.00
34.700A	$\varnothing$ 100 mm Standard	Alu Plastic	3'200 kg	1'600 kg	$\varnothing$ 12 mm 29 mm	1.23 kg	359.00	359.00
34.500B	$\varnothing$ 140 mm Standard	Steel Steel	3'200 kg	1'600 kg	$\varnothing$ 10 mm 28 mm	4.50 kg	630.00	630.00
34.600B	$\varnothing$ 180 mm Standard	Steel Steel	4'000 kg	2'000 kg	$\varnothing$ 11 mm 30 mm	8.00 kg	793.00	793.00
34.600BH	$\varnothing$ 180 mm Standard	Stahl Hardened steel	4'000 kg	2'000 kg	$\varnothing$ 11 mm 30 mm	8.00 kg	819.00	819.00
34.100A	$\varnothing$ 240 mm Standard	Alu Steel	5'000 kg	2'500 kg	$\varnothing$ 12 mm 40 mm	8.50 kg	1'047.00	1'047.00
34.100B	$\varnothing$ 240 mm Standard	Steel Steel	5'000 kg	2'500 kg	$\varnothing$ 12 mm 36 mm	11.70 kg	1'047.00	1'047.00
34.1000	$\varnothing$ 230 mm Breit	Steel Steel	5'000 kg	2'500 kg	$\varnothing$ 36 mm 83 mm	21.20 kg	1'358.00	1'358.00
34.200B	$\varnothing$ 320 mm Standard	Steel Steel	10'000 kg	5'000 kg	$\varnothing$ 16 mm 50 mm	31.00 kg	2'368.00	2'368.00
34.200BH	$\varnothing$ 320 mm Standard	Steel Hardened steel	10'000 kg	5'000 kg	$\varnothing$ 16 mm 50 mm	31.00 kg	2'441.00	2'441.00
34.2000	$\varnothing$ 320 Breit	Steel Steel	10'000 kg	5'000 kg	$\varnothing$ 60 mm 100 mm	45.00 kg	3'081.00	3'081.00
34.300B	$\varnothing$ 400 mm Standard	Steel Steel	20'000 kg	10'000 kg	$\varnothing$ 24 mm 70 mm	59.00 kg	4'572.00	4'572.00
34.3000B	$\varnothing$ 390 mm Breit	Steel Steel	20'000 kg	10'000 kg	$\varnothing$ 80 mm 140 mm	94.00 kg	7'087.00	7'087.00
34.100- 500	$\varnothing$ 500 mm Spezial	Steel Steel	4'000 kg	2'000 kg	$\varnothing$ 12 mm 36 mm	38.00 kg	2'945.00	2'945.00
34.800B	$\varnothing$ 600 mm Standard	Steel Steel	20'000 kg	10'000 kg	$\varnothing$ 24 mm 70 mm	100.00 kg	6'856.00	6'856.00

## Cable snatch blocks especially for rear cable winches



The extremely light and strong aluminium-plastic cable snatch block has been specially developed for tough use with forestry cable winches for ground traction. The snatch blocks are predominantly used with any forestry cable winches for ground traction such as e.g. tractor and hauler cable winches and is available in two different sizes for winches with tractive forces of max. 10 t and max. 16 t.

### Advantages:

- optimised for maximum load with minimum weight
- side plates and bolt made out of high-tensile aircraft aluminium, roller plastic
- ergonomic carrier handle
- hollow axle for suspending or fixing
- nut fixed to side plate
- secure fixation with threaded bolt
- specially wide to accept round slings or straps
- large block diameter (>10 times the cable diameter)
- Safety factor 2.5 (ground traction)
- all spares available individually from stock

Article no.	Type	max. cable-ø at 180° ground traction / (hoist)	max. bolt tension ground traction / (hoist)	max. cable-ø	ø-Roller	Weight	CHF	EUR
34.600TR	10 t	10 t / (5 t)	20 t / (10 t)	14 mm	ø 180 mm	6.70 kg	1'439.00	1'439.00
34.100TR	16 t	16 t / (8 t)	32 t / (16 t)	16 mm	ø 240 mm	11.00 kg	2'108.00	2'108.00

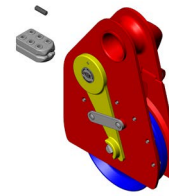
## Triple Pulley Blocks with mounting bracket



The triple pulley blocks are suspended on the terminal mast or on the skyline to guide the mainline. In order to guarantee correct winding onto the winch drum, the roller must be placed at least 30 times the drum width away from the cable winch. If the cable winch is closer to the terminal mast, the triple pulley block is hung onto the skyline and can be anchored on the ground.

Article no.	Type	Cable-ø	Weight	CHF	EUR
9.250_240	2.5	12 mm	24.80 kg	2'488.00	2'488.00
9.300_240	5	16 mm	34.80 kg	3'772.00	3'772.00
9.400_440	10	22 mm	51.00 kg	8'056.00	8'056.00
9.240	Mounting bracket, individual type 2.5 / type 5	universal	2.80 kg	320.00	320.00

## Automatic cable deflection roller



The automatically opening cable deflection roller permits loads to be pulled around obstacles without stopping. The automatic deflection roller opens as soon as the hook / spindle heads or cable clamp hits against the shift fork. This saves a laborious manual unclipping of the roller.

The roller is available for load capacities of 2.5 and 5 tonnes and may only be used for ground traction work. Do not exceed the max. cable tractive force, especially in operation with tractor winches.

Article no.	Type	Roller-ø	Max. traction on the bolt	Max. cable pull at 180°	Cable-ø up to max.	Weight	CHF	EUR
10.200H_250	2.5	240 mm	5 t	2.5 t	12 mm	13.40 kg	2'150.00	2'150.00
10.250	Cable clamp 2.5				12 mm	0.45 kg	123.00	123.00
10.300	5	320 mm	10 t	5 t	16 mm	44.50 kg	5'126.00	5'126.00

## Mainline idler pulley



The mainline idler pulley is used where the mainline scrapes heavily against the ground. Heavy wear and tear on the mainline can thus be avoided.

The mainline idler pulley is suspended with two arrestor cables on the supports and supporting mast and fixed or bolted to the ground with an anchor cable.

Article no.	Type	Roller-ø	Weight	CHF	EUR
9.100	2.5 / 5	173 mm	16.20 kg	2'111.00	2'111.00
9.100H	2.5 / 5, hardened roller	173 mm	16.20 kg	2'177.00	2'177.00
9.700	10	280 mm	100.00 kg	11'659.00	11'659.00

## Double deflection roller

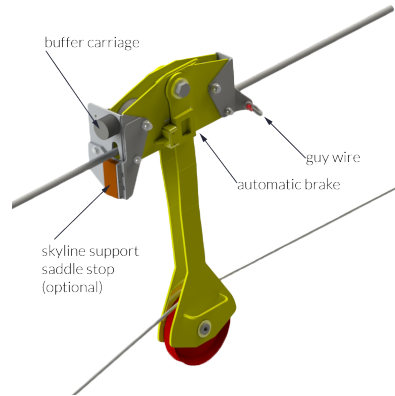


The double deflection roller is mainly used for circular drive cableways for support of circulating or return cables. The two rollers ensure stable and smooth guiding of the cable.

Art. no.	Roller-ø version	Material Plate Roller	Max. traction on the bolt	Max. cable pull at 180°	Weight	CHF	EUR
34.6200	ø 180 mm Standard	Steel Steel	4'000 kg	ø 11 mm 30 mm	15.50 kg	1'583.00	1'583.00
34.1200	ø 240 mm Standard / Typ 2.5	Steel Steel	5'000 kg	ø 12 mm 36 mm	approx. 25 kg	on request	on request
34.2200	ø 320 mm Standard / Typ 5	Steel Steel	10'000 kg	ø 16 mm 50 mm	approx. 65 kg	on request	on request



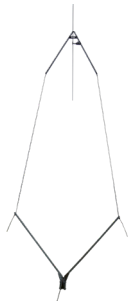
## Cable carrier with brake



The cable carrier holds the mainline up and close to the skyline so that wood can be safely transported away at the landing place. Thus the danger of the traction cable getting caught on the wood or on the gripper / processor of the excavator can be excluded. It is braced laterally from above and the automatic brake prevents running back when the traction cable pulley is under load. In addition there is a collision protection for the cable carrier, with which the cable carrier strikes the Wyssen skyline support saddle and is stopped. This enables the cable carrier to run with the carriage down to the 1st support (top support) and stops there as a high mounting for the skyline.

Article no.	Type	Weight	CHF	EUR
11.6010	Cable carrier with brake (by ordering give specification of carriage-typ)	52.00 kg	4'225.00	4'225.00
11.6625	Support saddle stop	3.35 kg	296.00	296.00

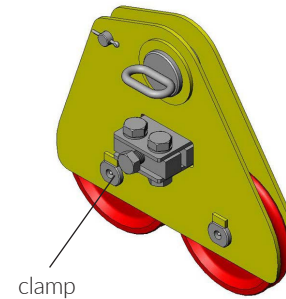
## Traversable cable carriers



The traversable cable carriers have widely different applications and are mainly used to keep the mainline up high. E.g. in the case of long spans sections or when crossing obstacles and forestry tracks, the chassis and loading platform or carriage can be driven through. The traversability can be adjusted as desired. The cable carrier is clamped to the skyline under spring pressure and available with either normal or hardened steel rollers furnished with ball-bearings.

Article no.	Type	Length	Weight	CHF	EUR
11.2000A	Cable carrier type 2.5 traversable for HY-3/HY-4	7.5 m	96.00 kg	6'242.00	6'242.00
11.2000AH	Cable carrier type 2.5 traversable for HY-3/HY-4, with hardened centre ring	7.5 m	96.00 kg	6'301.00	6'301.00
11.3000	Cable carrier type 5 traversable for HY-2, HY-3, HY- 4, SP, U	7.5 m	118.00 kg	7'252.00	7'252.00
11.3000H	Cable carrier type 5 traversable for HY-2, HY-3, HY- 4, SP, U	7.5 m	118.00 kg	7'313.00	7'313.00
11.3020	Vertical tube special type 2.5/type 5, instead of cable sling			859.00	859.00
11.4000	Cable carrier type 10 traversable for (skyline ø 46 mm)	6 m	240.00 kg	14'399.00	14'399.00

## Terminal mast block with clamp



The terminal mast block is used on the side of the skyline tension, so that the skyline slips optimally through the terminal mast when under tension. The skyline must not move on the rollers when the installation is in operation. If such a risk exists, the skyline is fixed after assembly and running in of the installation with the cable clamp to the roller pair, so that a cable breakage can be prevented. If the skyline is fixed with a cable clamp, the terminal mast block must be suspended on a correspondingly long cable sling.

Article no.	Type for carriage	Max. cable-ø Max. cable deflection Max. load	Weight	CHF	EUR
27.300B	2.5, incl. clamp HY-2, HY-4, SP, Univ., LW 2.5 t	24 mm 60° 15 t	23.60 kg	1'586.00	1'586.00
27.400A	5, incl. clamp HY-7, MSK 2, SP, Univ., LW 5 t	32 mm 60° 25 t	46.75 kg	2'630.00	2'630.00
27.500A	10, incl. clamp HY-7, MSK 2, LW 10 t	46 mm 60° 50 t	100.00 kg	6'517.00	6'517.00

## Clamp for terminal mast block

Article no.	Type	Weight	CHF	EUR
27.320	Clamp assembled type 2.5, ø 24 mm	3.24 kg	323.00	323.00
27.420	Clamp assembled type 5, ø 32 mm	7.12 kg	414.00	414.00

With few exceptions the clamp must always be assembled for safety reasons.

## Spar tree saddle



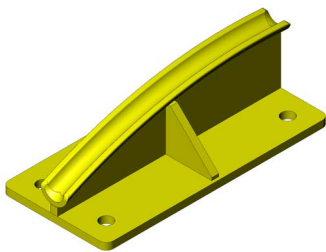
The spar tree saddle serves to hold up the skyline at the terminal mast.  
It is used on the side where the skyline is anchored only and not under tension.  
Compared to conventional skyline support saddles, the spar tree features are the light weight and cable deflections up to 60°.

Article no.	Type for carriage	Max. cable-ø Max. cable deflection Max. load	Weight	CHF	EUR
27.800	2.5 HY-2, HY-4, SP, Univ., LW 2.5 t	28 mm 60° 15 t	7.60 kg	871.00	871.00
27.900	5 HY-7, MSK 2, SP, Univ., LW 5 t	32 mm 60° 22 t	19.80 kg	1'254.00	1'254.00
27.1000	10 HY-7, MSK 2, LW 10 t	46 mm 60 ° 50 t	on request	on request	on request



Wyssen cable winch W-40

## Support saddles



The support saddle primarily serves as a skyline support over rock or concrete anchors, so that damage to the cable is prevented.

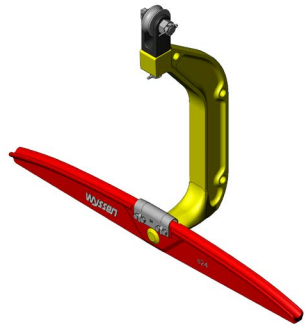
Article no.	Type for carriage	Max. Cable-ø Max. cable deflection	Weight	CHF	EUR
29.700	2.5 HY-2, HY-4, SP, Univ., LW 2.5 t	24 mm 30°	6.50 kg	757.00	757.00
29.600	5 HY-7, MSK 2, SP, Univ., LW 5 t	34 mm 30°	12.60 kg	1'133.00	1'133.00
29.500	10 HY-7, MSK 2, LW 10 t	46 mm 30 °	65.00 kg	3'258.00	3'258.00



Carriage Universal



## Skyline support saddle type 2.5

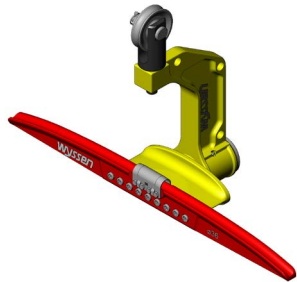


The tried and tested Wyssen skyline support saddle has been used for several years worldwide. It has excelled through its extreme high strength and at the same time its light weight.

The skyline support saddle type 2.5 is designed for a maximum saddle pressure of 6 t (safety factor of 4) and a max. cable deflection of 30°, which can be used for carriages 2.5 t, HY-2, HY-3, HY-4, slack-puller and the universal carriage. If the saddle pressure is greater or the cable deflection is more than 30° two saddles must be used together with the Wyssen support balance.

Article no.	Type	Max. cable-ø	Weight	CHF	EUR
7.1000D16	2.5	16 mm	23.00 kg	2'019.00	2'019.00
7.1000D18	2.5	18 mm	23.00 kg	2'019.00	2'019.00
7.1000D20	2.5	20 mm	23.00 kg	2'019.00	2'019.00
7.1000D24	2.5	24 mm	23.00 kg	2'019.00	2'019.00
7.1000D28	2.5	28 mm	23.00 kg	2'019.00	2'019.00
7.1000D32	2.5	32 mm	23.00 kg	2'019.00	2'019.00

## Skyline support saddle type 5

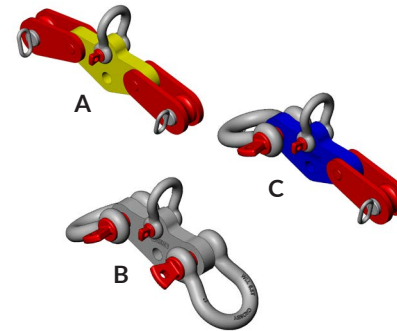


The Wyssen skyline support saddle type 5 has been developed for higher cable tensions and load capacities. It functions up to a maximum support pressure of 12 t (safety factor of 5) and a maximum cable deflection of 30°. The type 5 saddle can be used for the 5 t and HY-7 carriages, and for the MSK 2 motorised skyline crane. For higher loads two saddles may also be used with the Wyssen support balance.

Article no.	Type	Max. cable-ø	Weight	CHF	EUR
7.2000D32	5	32 mm	80.00 kg	8'557.00	8'557.00
7.2000D34	5	34 mm	80.00 kg	8'557.00	8'557.00
7.2000D36	5	36 mm	80.00 kg	8'557.00	8'557.00
7.2000D38	5	38 mm	80.00 kg	8'557.00	8'557.00
7.2000D40	5	40 mm	80.00 kg	8'557.00	8'557.00
7.2000D44	5	44 mm	80.00 kg	8'557.00	8'557.00

Skyline support saddles for cableways with higher load capacities are available on request.

## Special shakles



The special shackle is assembled on the clamp of the skyline support saddle and is used for securing the raising and pulling cables and also tree slings, which are simply assembled and prepared on the ground. The skyline support saddle can subsequently be raised together with the cables, fixed around the tree and then pulled forward. The articulated shackle greatly facilitates skyline support saddle assembly of supports. There is also a special version for nylon ropes and nylon slings.

Article no.	Type - guy line / pre-pulling cable	Weight	CHF	EUR
7.1100	(A) 2.5 - steel / steel	6.68 kg	661.00	661.00
7.1100NN	(B) 2.5 - nylon / nylon with 2 pcs shackle	7.60 kg	296.00	296.00
7.1100NS	(C) 2.5 - nylon / steel with 1 pcs shackle	7.10 kg	477.00	477.00
7.2100	(A) 5 - steel / steel	18.70 kg	1'611.00	1'611.00

## Accessories for the skyline support saddle



Curve saddles are also available for the Wyssen skyline support saddles type 2.5 and type 5, which depending on the carriage type and situation can handle curves up to a maximum of 7°.

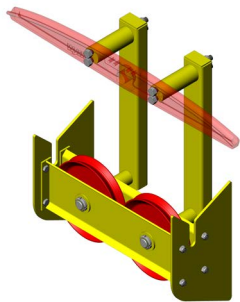
For right-handed curves the required clamping yoke must be used. In addition there is also a type 2.5 hold-down saddle with which the skyline can be slightly pulled down.

Article no.	Type	Weight	CHF	EUR
7.1010	Curve saddle type 2.5 (main crosspiece only with brackets)	11.40 kg	3'088.00	3'088.00
7.1011	Curve saddle type 5 (main crosspiece only with brackets)	20.00 kg	4'288.00	4'288.00

Article no.	Type	Weight	CHF	EUR
7.1013	Clamping yoke for skyline support saddle type 2.5 (set) for a right-hand curve (new red for all Wyssen carriages)	28.50 kg	980.00	980.00

Article no.	Type	Weight	CHF	EUR
7.1500D24	Hold-down saddle type 2.5 special	59.00 kg	3'635.00	3'635.00

Mainline cable pulley blocks

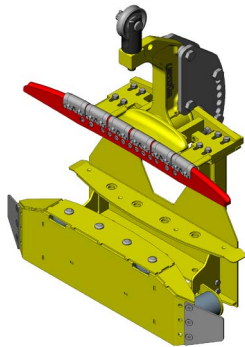


The function of the mainline cable pulley blocks is to position the mainline high up on the skyline support saddle. This can simply be attached to the skyline support saddle or taken away. The 2 or 4 roller block enables the mainline run through smoothly, thus reducing wear. The mainline cable pulley blocks can be used with the suitable drive units (e.g. supply cableways to Alpine farms).

Article no.	Type	Weight	CHF	EUR
7.1700	2 rollers for the skyline support saddle type 2.5 (to 7.1000)	60.90 kg	2'742.00	2'742.00
7.2700	4 rollers for the skyline support saddle type 5 (to 7.2000)	155.00 kg	5'061.00	5'061.00

The skyline support saddle is not included in delivery.

Curve saddle type 5 (modular)

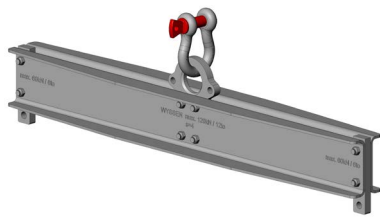


The curve saddle type 5 with high mainline positioner and clamping yoke is available as desired for left-hand and right-hand curves up to maximum of 10°. The curve saddle can be modularly converted to straight, right-hand or left-hand curves, and only requires modifications on the main crosspiece (blade). Existing Wyssen skyline support saddles can also be used after modification of the main crosspiece. A big benefit of the Wyssen curve saddle is that after small modifications, it can always be further used for new cableways.

Article no.	Type	Cable-ø mm	Weight	CHF	EUR
7.2700K-R	5, right-hand curve complete incl. skyline support saddle	32/34/36/38/40/44	425.00 kg	on request	on request
7.2700K-L	5, left-hand curve complete incl. skyline support saddle	32/34/36/38/40/44	351.30 kg	on request	on request
	5, conversion set for straight	32/34/36/38/40/44		on request	on request

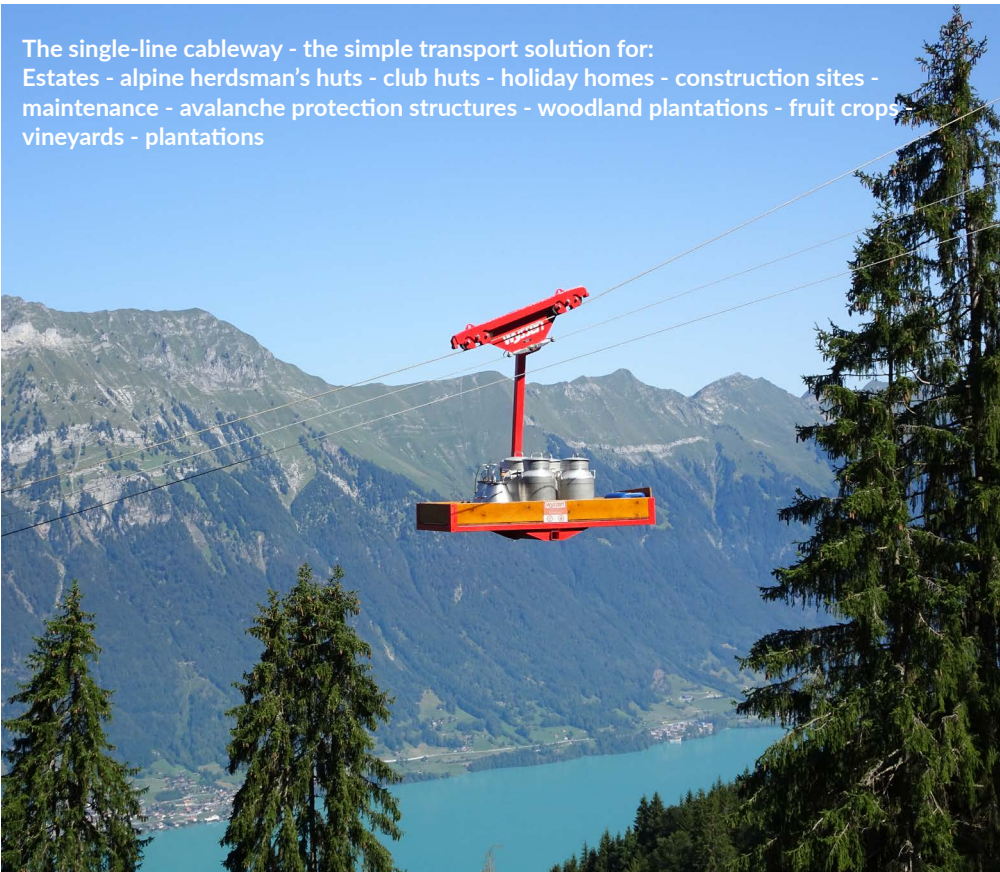
Article no.	Type	Weight	CHF	EUR
7.2705K	Mainline positioner for skyline support saddle type 5 for curves	232.60 kg	on request	on request
7.2012	Clamping yoke type 5 right-hand curve complete	112.20 kg	on request	on request
7.2012-L	Clamping yoke type 5 left-hand curve complete	38.60 kg	on request	on request

Support balances



If the support balances pressure is too high or the cable deflection is too large, these may be distributed over two skyline support saddles using support balances, so that extreme loading of the skyline support saddles can be prevented. The support balance with two skyline support saddles also leads to a gentler passage over the supports, which is why to skyline support saddles can also be traversed faster.

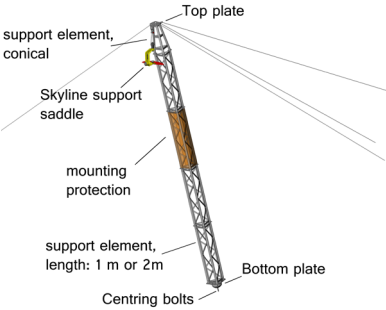
Article no.	Type	Max. load	Hole distance	Weight	CHF	EUR
7.1200V	for saddle type 2.5 with shakles 1 1/4"	12 t	1'450 mm	65.00 kg	1'867.00	1'867.00
7.1350	for saddle type 5 with shakles 2"	32 t	1'800 mm	291.00 kg	4'110.00	4'110.00
7.1350A	for terminal mast block type 5 with shakles 2", ear - hole ø 110 mm	32 t	1'800 mm	294.00 kg	4'110.00	4'110.00



The single-line cableway - the simple transport solution for:  
Estates - alpine herdsman's huts - club huts - holiday homes - construction sites - maintenance - avalanche protection structures - woodland plantations - fruit crops - vineyards - plantations



## DQT-Support material



With Wyssens' DQT support elements (width across corners 0.5 m), supports (single to triple) can be modularly assembled in different heights. You can also order complete supports from us in the desired height including standard anchoring materials.

When constructing a support, please observe the respective approved support pressure. Please observe the operating manual! The Wyssen DQT elements must not be used / combined together with similar (even supposedly compatible) elements!

Further DQT material and larger elements (width across corners 1.0 m) are available on request.

## DQT-Support elements

Article no.	Type	Weight	CHF	EUR
29.1500-2	DQT Steel grid support element, length 2 m	57.00 kg	811.00	811.00
29.1500-1	DQT Steel grid support element, length 1 m	37.00 kg	559.00	559.00
29.1500-1K	DQT Steel grid support element, length 1 m (conical)	33.00 kg	653.00	653.00

## Single DQT support

Article no.	Type	Weight	CHF	EUR
29.1017	Top plate for a single DQT support (conical)	19.20 kg	1'055.00	1'055.00
29.1010	Bottom plate for a single DQT support (without centring bolts)	44.23 kg	1'520.00	1'520.00
29.1011	Centring bolts for the bottom plate of a single DQT support	2.37 kg	183.00	183.00
29.1030	Intermediate plate for single DQT support	20.00 kg	300.00	300.00
29.1520	Sling mounting protection	2.75 kg	645.00	645.00

## Double DQT support

Article no.	Type	Weight	CHF	EUR
29.1640	Top plate for a double DQT support (conical)	93.00 kg	3'125.00	3'125.00
29.1651	Bottom plate for a double DQT support (conical)	49.00 kg	2'605.00	2'605.00
29.1652	Centring bolts for the bottom plate of a double DQT support (conical)	4.00 kg	238.00	238.00
29.1631	Cap for a double to quadruple DQT support	0.70 kg	28.70	28.70
29.1630	Connecting strap for a double to quadruple DQT support	2.10 kg	48.90	48.90
29.1632-2	Intermediate plate for double DQT support	12.00 kg	331.00	331.00

## Triple DQT support

Article no.	Type	Weight	CHF	EUR
29.1620	Top plate for a triple DQT support (conical)	177.33 kg	3'557.00	3'557.00
29.1600	Wyssen bottom piece for a triple DQT support (conical)	157.00 kg	4'195.00	4'195.00
29.1601	Centring bolts for bottom piece of triple DQT support (conical)	6.60 kg	190.00	190.00
29.1631	Cap for a double to quadruple DQT support	0.70 kg	28.70	28.70
29.1630	Connecting strap for a double to quadruple DQT support	2.10 kg	48.90	48.90
29.1632-3	Intermediate plate for triple DQT-support	42.35 kg	602.00	602.00

## A-DQT-supports

Article no.	Type	Weight	CHF	EUR
29.1006	Top plate for support yoke for DQT A-support	42.00 kg	1'489.00	1'489.00
29.1012	Top plate with hinge for A support (conical)	40.00 kg	1'748.00	1'748.00
29.1010	Bottom plate for a single DQT support (without centring bolts)	44.23 kg	1'520.00	1'520.00
29.1011	Centring bolts for the bottom plate of a single DQT support	2.37 kg	183.00	183.00

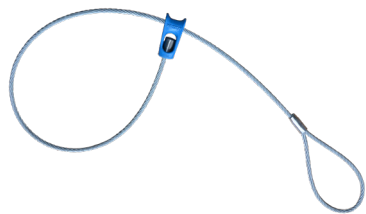
On request, A supports in double and triple versions as well as various other versions are available.

## Screw / Washer / Nut

Article no.	Type	Weight	CHF for 1 pc CHF for 50 pcs	EUR for 1 pc EUR for 50 pcs
4151M14X050	Hex Cap Screw ISO 4014 M14X050	0.08 kg	1.80	1.80
			1.60	1.60
4623M14	Spring Lock Washer DIN 128 A Vossloh M14	0.01 kg	0.40	0.40
			0.30	0.30
4513M14	Hexagon Nut ISO 4032 M14	0.02 kg	0.70	0.70
			0.60	0.60



## Cable slings



Cable slings with sling hooks (cable construction 6x25FW+WC/galvanised), with a stud on one side and slings for the choker ring on the other side, are available with 11 mm and 13 mm diameters in various lengths. Wyssen sling hooks are tested for cracks and are made out of high-quality material, that depending on the length of the sling are in each case indicated in the appropriate colour. On request we can manufacture choker slings in other lengths for you.

Article no.	Type - ø x length	Breaking Load	Weight	CHF for 1 pc CHF for 10 pcs CHF for 20 pcs	EUR for 1 pc EUR for 10 pcs EUR for 20 pcs
39.300D11B	Blue - ø 11 x 2.0 m	7.9 t	1.90 kg	95.00 85.50 78.80	95.00 85.50 78.80
39.300D11G	Yellow - ø 11 x 2.5 m	7.9 t	2.20 kg	97.90 88.30 81.30	97.90 88.30 81.30
39.300D11S	Silver - ø 11 x 3.0 m	7.9 t	2.50 kg	102.00 90.90 84.40	102.00 90.90 84.40
39.300D11R	Red - ø 11 x 3.5 m	7.9 t	2.80 kg	105.00 93.70 82.60	105.00 93.70 82.60

Article no.	Type - ø x length	Breaking Load	Weight	CHF for 1 pc CHF for 10 pcs CHF for 20 pcs	EUR for 1 pc EUR for 10 pcs EUR for 20 pcs
39.300D13B	Blue - ø 13 x 2.0 m	11.0 t	2.50 kg	97.90 89.70 81.30	97.90 89.70 81.30
39.300D13G	Yellow - ø 13 x 2.5 m	11.0 t	2.80 kg	102.00 92.30 84.40	102.00 92.30 84.40
39.300D13S	Silver - ø 13 x 3.0 m	11.0 t	3.10 kg	105.00 95.00 88.20	105.00 95.00 88.20
39.300D13R	Red - ø 13 x 3.5 m	11.0 t	3.40 kg	109.00 97.90 90.90	109.00 97.90 90.90

For exchange slings we grant a discount (39.300AUST), provided your sling hooks can be further utilised.

## Choker ring



The choker ring enables scattered tree trunks to be collected for loading in one operation by pulling sideways. The high-strength hardened and extremely light Wyssen choker ring can be quickly mounted both with and without tools. The highest degree of safety is guaranteed by the large wrap of the ring, which reduces cable wear and in addition in the case of ring breakage, the load remains hanging in the sling on the end / mainline. Choker rings can be used for cable slings ø 11 - 13 mm.

Article no.	Type	Weight	CHF for 1 pc CHF for 10 pcs CHF for 20 pcs	EUR for 1 pc EUR for 10 pcs EUR for 20 pcs
31.3420	ø 11 - 13 mm	1.25 kg	132.00 121.00 114.00	132.00 121.00 114.00

## Choker slings



Choker slings with sling hooks (cable construction 6x25FW+WC/galvanised), with a stud on both ends, are available with 11 mm and 13 mm diameters in various lengths. Wyssen sling hooks are tested for cracks and are made out of high-quality material that depending on the length of the sling is colour-coded in the corresponding colour. On request we can manufacture choker slings in other lengths for you.

Article no.	Typ - ø x length	Breaking Load	Weight	CHF for 1 pc CHF for 10 pcs CHF for 20 pcs	EUR for 1 pc EUR for 10 pcs EUR for 20 pcs
39.400D11B	Blue - ø 11 x 1.75 m	7.9 t	1.70 kg	93.70 84.40 77.40	93.70 84.40 77.40
39.400D11G	Yellow - ø 11 x 2.0 m	7.9 t	1.80 kg	95.00 85.50 78.80	95.00 85.50 78.80
39.400D11S	Silver - ø 11 x 2.25 m	7.9 t	2.00 kg	96.30 88.20 80.20	96.30 88.20 80.20
39.400D11R	Red - ø 11 x 2.5 m	7.9 t	2.10 kg	97.90 89.70 81.30	97.90 89.70 81.30



## Cable sling with sliding hook



Cable slings with sling hooks (cable construction 6x36WS+FC/galvanised) at one end with a loop and thimble to clip into the sliding hook when wrapping round the tree and at the other end a loop for clipping into the skyline support saddle, are used for rapid and safe suspension of the skyline support saddle onto tree supports. On request we can also manufacture cable slings in other lengths for you up to a max.  $\varnothing$  24 mm.

Article no.	$\varnothing$ x length	Breaking load	Weight	CHF	EUR
39.500D20-2	$\varnothing$ 20 x 2.0 m	23.2 t	6.60 kg	193.00	193.00
39.500D20-2.5	$\varnothing$ 20 x 2.5 m	23.2 t	7.20 kg	199.00	199.00
39.500D20-3	$\varnothing$ 20 x 3.0 m	23.2 t	8.00 kg	203.00	203.00
39.500D20-3.5	$\varnothing$ 20 x 3.5 m	23.2 t	8.80 kg	208.00	208.00
39.500D22-2.5	$\varnothing$ 22 x 2.5 m	28.1 t	8.30 kg	274.00	274.00
39.500D22-3.5	$\varnothing$ 22 x 3.5 m	28.1 t	10.10 kg	283.00	283.00
39.500D24-2.5	$\varnothing$ 24 x 2.5 m	33.4 t	10.20 kg	303.00	303.00
39.500D24-3.5	$\varnothing$ 24 x 3.5 m	33.4 t	12.30 kg	317.00	317.00

Additional diameters and lengths on request. For exchange slings we grant a discount (39.500AUST), provided your sliding hooks can be further utilised.

## Pre-fabricated steel wire cables



On request we can manufacture various slings and rope slings in a wide variety of dimensions.

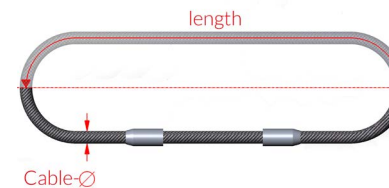
## Sling hooks (cable lock, slide)



Sling hook for cable loop and choker sling, made of high-strength heat-treated steel, tested for cracks, for cable  $\varnothing$  11 - 13 mm. Available in different colours (red, blue, yellow or silver) as well as rust protection. Price dependent on surface treatment and quantity.

Article no.	for cable- $\varnothing$	Weight	CHF	EUR
39.100A-R	11 - 13 mm	0.56 kg	on request	on request

## Wire rope slings



The continuous wire rope slings (cable construction 6x36WS+FC/galvanised) is primarily used for tree and ground anchoring (dead man) and for suspending skyline support saddles. The automatic skyline clamp, straining clamps and the skyline support saddle can be easily and safely mounted.

Observe safety factor depending on application!

Article no.	Type for	Cable- $\varnothing$	Length	Breaking Load	Weight	CHF	EUR
39.600D18-02	support saddle 2.5	18 mm	1 m	38.4 t	3.10 kg	99.40	99.40
39.600D18-03	support saddle 2.5	18 mm	1.5 m	38.4 t	4.40 kg	110.00	110.00
39.600D18-04	support saddle 2.5	18 mm	2 m	38.4 t	5.60 kg	119.00	119.00
39.600D18-06	support saddle 2.5	18 mm	3 m	38.4 t	8.10 kg	135.00	135.00
39.600D18-08	support saddle 2.5	18 mm	4 m	38.4 t	10.50 kg	152.00	152.00
39.600D18-12	tree anchor 2.5	18 mm	6 m	38.4 t	15.40 kg	186.00	186.00
39.600D18-18	tree anchor 2.5	18 mm	9 m	38.4 t	22.80 kg	237.00	237.00
39.600D18-25	ground anchor 2.5	18 mm	12.5 m	38.4 t	31.40 kg	297.00	297.00
39.600D20-04	support saddle 2.5	20 mm	2 m	47.4 t	7.00 kg	127.00	127.00
39.600D20-06	support saddle 2.5	20 mm	3 m	47.4 t	10.00 kg	145.00	145.00
39.600D20-14	tree anchor 2.5	20 mm	7 m	47.4 t	22.20 kg	215.00	215.00
39.600D20-25	ground anchor 2.5	20 mm	12.5 m	47.4 t	38.90 kg	311.00	311.00
39.600D22-02.5	support saddle 5	22 mm	1.25 m	57.5 t	5.90 kg	125.00	125.00
39.600D22-04	support saddle 5	22 mm	2 m	57.5 t	8.70 kg	141.00	141.00
39.600D22-08	support saddle 5	22 mm	4 m	57.5 t	16.10 kg	182.00	182.00
39.600D22-14	tree anchor 5	22 mm	7 m	57.5 t	27.10 kg	244.00	244.00
39.600D22-25	ground anchor 5	22 mm	12.5 m	57.5 t	47.30 kg	359.00	359.00
39.600D26-06	support saddle 5	26 mm	3 m	80.2 t	17.40 kg	274.00	274.00
39.600D26-09	support saddle 5	26 mm	4.5 m	80.2 t	25.10 kg	320.00	320.00
39.600D26-14	support saddle 5	26 mm	7 m	80.2 t	38.00 kg	404.00	404.00
39.600D28-04	support saddle 5	28 mm	2 m	93.1 t	13.90 kg	264.00	264.00
39.600D28-14	support saddle 5	28 mm	7 m	93.1 t	42.10 kg	437.00	437.00
39.600D28-25	ground anchor 5	28 mm	12.5 m	93.1 t	73.10 kg	595.00	595.00
39.600D30-3	support saddle	30 mm	1.5 m	106.8 t	17.20 kg	275.00	275.00
39.600D30-4.5	support saddle	30 mm	2.25 m	106.8 t	17.60 kg	290.00	290.00

On request we can also manufacture wire rope slings in other lengths and diameters for you.

Anchoring cables



Anchoring cables (guy line cable) are galvanised with a thimble or loop at one end are used for anchoring supports, cable winches, multiple tree anchors etc. These are available in different standard lengths and diameters as well as in other desired dimensions.

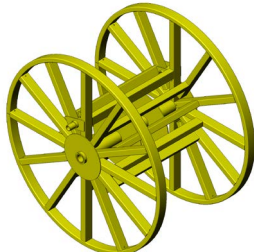
Article-no.	Type	Cable-ø	Length	Weight	CHF	EUR
39.620D12-20	with thimble and pressing	12 mm	20 m	10.00 kg	143.00	143.00
39.620D12-30	with thimble and pressing	12 mm	30 m	15.00 kg	202.00	202.00
39.620D12-40	with thimble and pressing	12 mm	40 m	20.00 kg	261.00	261.00
39.620D12-45	with thimble and pressing	12 mm	45 m	22.50 kg	291.00	291.00
39.620D12-50	with thimble and pressing	12 mm	50 m	25.00 kg	321.00	321.00
39.630D12-30	with loop and pressing	12 mm	30 m	15.00 kg	200.00	200.00
39.630D12-35	with loop and pressing	12 mm	35 m	18.00 kg	230.00	230.00
39.630D12-40	with loop and pressing	12 mm	40 m	20.00 kg	259.00	259.00
39.630D12-45	with loop and pressing	12 mm	45 m	23.00 kg	289.00	289.00
39.630D12-50	with loop and pressing	12 mm	50 m	25.00 kg	320.00	320.00
39.630D12-55	with loop and pressing	12 mm	55 m	28.00 kg	347.00	347.00
39.630D12-60	with loop and pressing	12 mm	60 m	30.00 kg	378.00	378.00
39.630D16-50	with loop and pressing	16 mm	50 m	45.00 kg	397.00	397.00
39.630D16-60	with loop and pressing	16 mm	60 m	54.00 kg	469.00	469.00
39.630D16-70	with loop and pressing	16 mm	70 m	63.00 kg	542.00	542.00
39.630D24-80	with loop and pressing	24 mm	80 m	170.00 kg	1'207.00	1'207.00

On request anchor cable extensions with loop or thimble on both sides are available.

We can also deliver every skyline and mainline for you. We will be pleased to send you our offer.

We also have a wide selection of used cables, just ask us or look at the current list on our website under [www.wyssenseilbahnen.com/en/used-equipment/](http://www.wyssenseilbahnen.com/en/used-equipment/) (second-hand-market).

Cable reels



Cable reels made out of steel are available in two sizes and depending on the type are either galvanised or coated with a yellow rust protection. With every cable reel a reducing sleeve is included so that the hole diameter for the shaft can be reduced from 81 mm to 62 mm. The reels are also prepared for simple connection (tappet) for the Wyssen cable spool drive.

Article no.	Type	Reel-ø outer inner	Width outer inner	Weight	CHF	EUR
30.300SR	150 (Hole 81/62 mm)	1500 mm 700 mm	1122 mm 900 mm	215.00 kg	2'405.00	2'405.00
30.300S-170	170 (Hole 81/62 mm) galvanised	1700 mm 700 mm	1122 mm 900 mm	390.00 kg	2'708.00	2'708.00

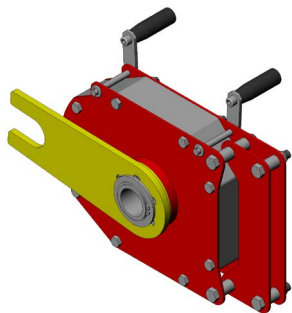
Cable capacities of the cable reels

Cable-ø	Cable lengths for reel ø 1500 mm	Cable lengths for reel ø 1700 mm
14 mm	4750 m	6780 m
16 mm	3605 m	5120 m
18 mm	2895 m	4020 m
20 mm	2307 m	3325 m
22 mm	1814 m	2730 m
24 mm	1550 m	2210 m
25 mm	1507 m	2160 m
26 mm	1320 m	1940 m
27 mm	1287 m	1735 m
28 mm	1120 m	1700 m
29 mm	1092 m	1510 m
30 mm	942 m	1480 m
32 mm	901 m	1280 m
34 mm	753 m	1010 m
36 mm	724 m	947 m
38 mm	598 m	917 m
40 mm	577 m	777 m

The cable capacity is so calculated, that there is 7.5 cm free space on both sides between the cable on the outer diameter, so that it is still possible to roll the reel. On request we can also provide you with details about other cable diameters.



Cable spool drive

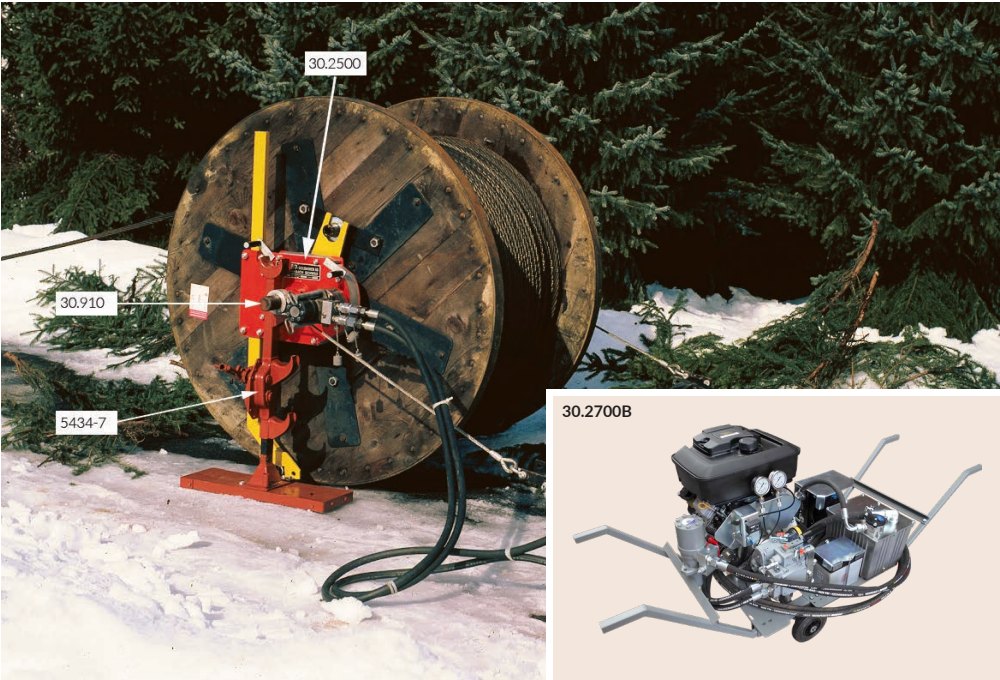


The Wyssen cable spool drive is a special device for quick and easy winding and unwinding of steel wire cables. The tractive force is approx. 500 kg and the speed of about 1.5 m/s for a cable layer of  $\varnothing$  1 m. On account of its capacity and minimal weight, the capability is ideally suitable for mobile operation thanks to its quick and easy installation.

The cable spool drive can optionally be delivered with the cable winch W-10. The Wyssen hydraulic unit or with suitable hydraulic hose quick release connectors for your machine such as tractors, truck cranes etc.

Picture without accessories

Article no.	Type	Weight	CHF	EUR
30.2500	Hydraulic cable spool drive complete with accessories	94.00 kg	9'948.00	9'948.00
30.2700B	Hydraulic unit for cable spool drive 18 PS	183.00 kg	12'446.00	12'446.00
46.SKZB	Quick release coupling to W-10 for cable spool drive		513.00	513.00



Cable spool jack



The cable spool jack is manufactured in Switzerland and is used for lifting the cable drums (2 are needed) for winding and unwinding steel wire cables. The winches are characterised by their low eight and high load bearing capacity and also the large base plate, which prevents sliding or overturning. The cable spool jacks are equipped with solid ratchet - safety lever including an operating bar.

Article no.	Type	Lifting capacity per article	Spool $\varnothing$ min. - max.	Weight	CHF	EUR
5434-5	Cable spool jack Robor	5 t	500 - 2'400 mm	30.00 kg	1'290.00	1'290.00
5434-7	Cable spool jack Robor	7 t	600 - 2'400 mm	42.00 kg	1'946.00	1'946.00
5434-10	Cable spool jack Simplex	9 t	500 - 2'400 mm	on request	on request	on request

Shafts and sleeves



These can be raised using the cable spool jack with the suitable shaft for your cable reel. The shaft is made of high-strength steel to prevent strong deflection. In order to ensure that the cable reel turns perfectly, a sleeve is fitted over the shaft both to the left and right between the cable reel and the cable spool drive. Special dimensions are also available on request.

Article no.	Type	Diameter	Length	Weight	CHF	EUR
30.910	Shaft for cable reel	45 mm	1.8 m	22.50 kg	313.00	313.00
30.912	Sleeve for shaft 30.910			1.30 kg	44.90	44.90
30.920	Shaft for cable reel	55 mm	2.0 m	37.00 kg	455.00	455.00
30.922	Sleeve for shaft 30.920			1.60 kg	69.30	69.30
30.930	Shaft for cable reel	85 mm	2.5 m	112 kg	459.00	459.00

## Foot-operated winch

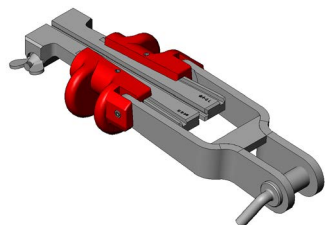


The robust and very light Swiss-made foot-operated winch (rack and pinion jack) has a very high load bearing capacity and is used for every possible lifting and moving application of heavy loads. In the aerial cableway sector, the foot-operated winch is very often used for aligning cable winches.

The foot-operated winch is delivered with ratchet safety hand crank.

Article No.	Type	Dimension	Weight	CHF	EUR
5433-1.5	Foot-operated winch	1.5 t	11.30 kg	526.00	526.00
5433-3	Foot-operated winch	3 t	14.50 kg	569.00	569.00
5433-5	Foot-operated winch	5 t	24.00 kg	711.00	711.00
5433-7	Foot-operated winch	7 t	27.00 kg	962.00	962.00
5433-10	Foot-operated winch	10 t	35.00 kg	1'181.00	1'181.00

## Wyssen automatic clamp

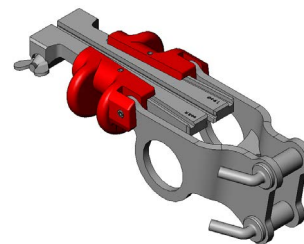


The automatic clamp with a single attachment bolt, self-clamping clamping jaws and a special groove is used for pulling, lifting and securing steel wire cables. In the aerial cableway sector, the automatic clamp is often used for pre-tensioning of support guys. Pre-clamping with wing nuts causes the clamps to slide automatically into the wedging, so that depending on the traction, the required clamping pressure is generated for a secure clamping. In case of impact, the cable is prevented from jumping out.

Article No.	Type	Max. tension	for cable-ø	Weight	CHF	EUR
35.4100D-06	Single attachment bolt	1'600 kg	bis 6 mm	3.30 kg	609.00	609.00
35.4100D06-08	Single attachment bolt	1'600 kg	6 - 8 mm	3.30 kg	609.00	609.00
35.4100D08-10	Single attachment bolt	1'600 kg	8 - 10 mm	3.30 kg	609.00	609.00
35.4100D10-12	Single attachment bolt	1'600 kg	10 - 12 mm	3.30 kg	609.00	609.00
35.4008	Clamping jaw left	1'600 kg	by choice	0.40 kg	129.00	129.00
35.4009	Clamping jaw right	1'600 kg	by choice	0.40 kg	129.00	129.00

Article No.	Type	Max. tension	for cable-ø	Weight	CHF	EUR
35.5100D12-15	Single attachment bolt	3'200 kg	12 - 15 mm	7.40 kg	1'417.00	1'417.00
35.5100D15-18	Single attachment bolt	3'200 kg	15 - 18 mm	7.40 kg	1'417.00	1'417.00
35.5008	Clamping jaw left	3'200 kg	by choice	1.02 kg	232.00	232.00
35.5009	Clamping jaw right	3'200 kg	by choice	1.04 kg	232.00	232.00

## Wyssen automatic clamp (two attachment bolts)



The automatic clamp with two attachment bolts is practically identical to the standard automatic clamp. This automatic clamp is equipped with two bolts and has additionally a hole in the bracket, through which a bar / piece of wood can be inserted to prevent twisting of the automatic clamp. One bolt is used as a fixation when tightening and with the other bolt a second fastening can be clipped in, so that the fixation of the tightening bolt can be easily released.

Article no.	Type	Max. tension	für cable-ø	Weight	CHF	EUR
35.4000D-06	Double attachment bolts	1'600 kg	to 6 mm	3.70 kg	609.00	609.00
35.4000D06-08	Double attachment bolts	1'600 kg	6 - 8 mm	3.70 kg	609.00	609.00
35.4000D08-10	Double attachment bolts	1'600 kg	8 - 10 mm	3.70 kg	609.00	609.00
35.4000D10-12	Double attachment bolts	1'600 kg	10 - 12 mm	3.70 kg	609.00	609.00
35.4008	Clamping jaw left	1'600 kg	by choice	0.40 kg	129.00	129.00
35.4009	Clamping jaw right	1'600 kg	by choice	0.40 kg	129.00	129.00

## Bugnard cable tensioning clamp



The Bugnard cable tensioning clamp with retaining spring is used for pulling, lifting and securing steel wire cables. This clamp made out of special steel and drop forged is parallel clamping with smooth clamping jaws with a V profile on the inside. Attention: The clamp may only be used for ground traction, since in case of impact, it could release from the cable.

Article no.	Type	Max. tension	for cable-ø	Weight	CHF	EUR
5439D05.5-14	Bugnard	3'630 kg	5.5 - 14 mm	2.72 kg	503.00	503.00
5439D08-16	Bugnard	6'810 kg	8 - 16 mm	6.93 kg	1'110.00	1'110.00
5439D12-19	Bugnard	6'810 kg	13 - 19 mm	7.35 kg	1'079.00	1'079.00
5439D19-25	Bugnard	6'810 kg	19 - 25 mm	7.35 kg	1'081.00	1'081.00

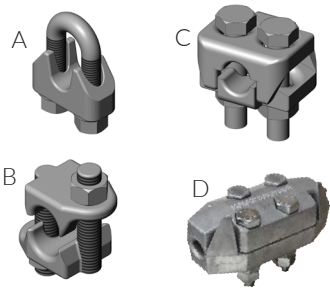
## Crosby wedge socket



The wedge socket functions as an end connection and as a fixation for steel wire cables. The dead end of the steel wire cable is secured in the wedge, in such a way that the wedge cannot be ejected or lost. The automatic clamp can be simply mounted and dismantled at any time and used further.

Article No.	Type	for cable-ø	Weight	CHF	EUR
5451D10	3/8"	9 - 10 mm	1.00 kg	124.00	124.00
5451D13	1/2"	11 - 13 mm	2.10 kg	174.00	174.00
5451D16	5/8"	14 - 16 mm	4.00 kg	248.00	248.00
5451D19	3/4"	18 - 19 mm	6.00 kg	300.00	300.00
5451D22	7/8"	20 - 22 mm	10.00 kg	368.00	368.00
5451D26	1"	24 - 26 mm	15.00 kg	485.00	485.00

## Clamps



U-clamps, fist grip clamps and Duplex clamps are galvanised and are primarily used for loop connections. In each case the required cable diameter and the number of clamps per cable diameter should be noted (see table below). The clamps must be tightened under loading, since the cable becomes somewhat thinner under load and thus can become loose. The clamp connections as a rule attain approx. 80% of the minimum cable breaking strength.

Article No.	Type (A)	Number per loop	Spanner width	for cable-ø	Weight	CHF	EUR
5442D05	U-Clamp	3	8	4 - 5 mm	0.02 kg	1.30	1.30
5442D06.5	U-Clamp	3	10	5.5 - 6.5 mm	0.04 kg	1.30	1.30
5442D08	U-Clamp	4	13	7 - 8 mm	0.08 kg	1.50	1.50
5442D10	U-Clamp	4	13	8.5 - 10 mm	0.09 kg	1.60	1.60
5442D12	U-Clamp	4	15	12 mm	0.28 kg	3.40	3.40
5442D14	U-Clamp	4	18	14 mm	0.28 kg	5.10	5.10
5442D16	U-Clamp	4	21	14 - 16 mm	0.43 kg	6.70	6.70
5442D19	U-Clamp	4	22	17 - 19 mm	0.49 kg	8.50	8.50
5442D22	U-Clamp	5	24	20 - 22 mm	0.68 kg	11.30	11.30
5442D26	U-Clamp	5	32	23 - 26 mm	1.17 kg	25.80	25.80
5442D30	U-Clamp	6	32	27 - 30 mm	1.40 kg	31.50	31.50
5442D34	U-Clamp	6	36	31 - 34 mm	2.13 kg	38.10	38.10
5442D40	U-Clamp	6	36	35 - 40 mm	2.68 kg	46.90	46.90

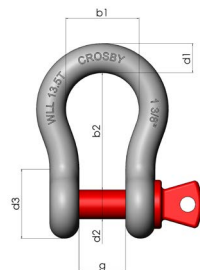
Article no.	Type (B)	Number per loop	Spanner width	for cable-ø	Weight	CHF	EUR
5443D10	Fist grip clamp	2	19	10 mm	0.18 kg	27.80	27.80
5443D11-13	Fist grip clamp	3	22	11 - 13 mm	0.32 kg	33.80	33.80
5443D14-16	Fist grip clamp	3	27	14 - 16 mm	0.45 kg	46.20	46.20
5443D18-20	Fist grip clamp	3	32	18 - 20 mm	0.79 kg	63.40	63.40
5443D22	Fist grip clamp	4	32	22 mm	1.02 kg	80.40	80.40
5443D24-26	Fist grip clamp	5	32	24 - 26 mm	1.36 kg	98.30	98.30
5443D28-30	Fist grip clamp	5	36	28 - 30 mm	1.81 kg	122.00	122.00
5443D32-34	Fist grip clamp	6	36	32 - 34 mm	1.81 kg	132.00	132.00
5443D36-40	Fist grip clamp	7	41	36 - 40 mm	3.18 kg	194.00	194.00

Article no.	Typ (C + D)	Number per loop	Spanner width	for cable-ø	Weight	CHF	EUR
5444D06	Duplex (C)	3	10	04 - 06 mm	0.09 kg	4.60	4.60
5444D09	Duplex (C)	4	13	07 - 09 mm	0.15 kg	8.10	8.10
5444D10	Duplex (C)	4	13	08 - 10 mm	0.23 kg	10.10	10.10
5444D12	Duplex (C)	4	17	09 - 13 mm	0.30 kg	12.40	12.40
5444D16	Duplex (C)	4	17/19	14 - 16 mm	0.55 kg	16.90	16.90
5444D20	Duplex (C)	4	22	16 - 20 mm	0.85 kg	30.10	30.10
5444D25	Duplex (C)	5	24	20 - 25 mm	1.34 kg	52.50	52.50
5444D20IG	IronGrip (D)	2	21	17 - 20 mm	1.18 kg	35.20	35.20
5444D25IG	IronGrip (D)	2	27	21 - 25 mm	2.80 kg	80.30	80.30
5444D34IG	IronGrip (D)	2	30	26 - 34 mm	7.70 kg	203.00	203.00





## Shackles



The forged and hardened shackles are known for their very high quality. (Safety factor: 6)

Together with the suitable Wyssen anchor rollers the shackles are used for guy lines and anchor cables. (For suitable anchor rollers see page 31)

Details such as allowed loading, size, manufacturer's name and CE sign are marked on the loop.

Article no.	Load capacity kg	Type	b1 mm	b2 mm	d1 ø in mm	d2 ø in mm	d3 ø in mm	g mm	Weight	CHF	EUR
5445-0.5	500	1/4"	19.8	28.7	6.35	7.87	15.5	11.9	0.05 kg	2.20	2.20
5445-1	1'000	3/8"	26.2	36.6	9.65	11.2	23.1	16.8	0.14 kg	3.50	3.50
5445-1.5	1'500	7/16"	29.5	42.9	11.2	12.7	26.9	19.0	0.17 kg	3.90	3.90
5445-2	2'000	1/2"	33.3	47.8	12.7	16.0	30.2	20.6	0.29 kg	5.10	5.10
5445-3.25	3'250	5/8"	42.9	60.5	17.5	19.1	38.1	26.9	0.63 kg	6.90	6.90
5445-4.75	4'750	3/4"	51.0	71.5	20.6	22.4	46.0	31.8	1.02 kg	8.80	8.80
5445-6.5	6'500	7/8"	58.0	84.0	24.6	25.4	53.0	36.6	1.53 kg	12.70	12.70
5445-8.5	8'500	1"	68.5	95.5	26.9	28.7	60.5	42.9	2.41 kg	18.90	18.90
5445-9.5	9'500	1 1/8"	74.0	108	31.8	31.8	68.5	46.0	3.09 kg	24.70	24.70
5445-12	12'000	1 1/4"	82.5	119	35.1	35.1	76.0	51.5	4.31 kg	34.70	34.70
5445-13.5	13'500	1 3/8"	92.0	133	38.1	38.1	84.0	57.0	6.01 kg	47.90	47.90
5445-17	17'000	1 1/2"	98.5	146	41.2	41.4	92.0	60.5	7.80 kg	60.60	60.60
5445-25	25'000	1 3/4"	127	178	57.0	51.0	106	73.0	13.80 kg	101.00	101.00
5445-35	35'000	2"	146	197	61.0	57.0	122	82.5	20.40 kg	151.00	151.00
5445-55	55'000	2 1/2"	170	267	79.5	70.0	145	105	38.90 kg	on request	on request

## Aluminium anchor roller for shackles



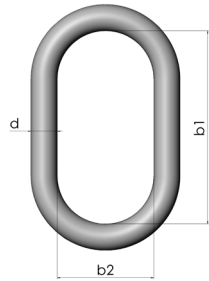
The aluminium anchor rollers are used for fastening steel wire cables, such as anchor cables, guy wires and skylines. The roller size is matched to the cable diameter and protects the cable from wear and prevents cable breakage. 2-groove anchor rollers can be used with round slings. For ø 12 mm and ø 16 mm it is also possible to use the appropriate shackles with 2 rollers, so that two loops can be tensioned independently.

Article no.	Type	for cable-ø	for shackle	Weight	CHF	EUR
36.803	1-groove	6 mm	1/4"	0.02 kg	20.70	20.70
36.804	1-groove	9.5 - 10.5 mm	1/2"	0.07 kg	28.70	28.70
36.805	1-groove	9.5 - 12 mm	5/8"	0.14 kg	35.30	35.30
36.807	1-groove with 2 rollers*	9.5 - 12 mm	3/4"	0.09 kg	49.20	49.20
36.809	1-groove	16 mm	3/4"	0.31 kg	73.70	73.70
36.810	1-groove with 2 rollers*	16 mm	7/8"	0.14 kg	81.50	81.50
36.812	1-groove	18 mm	7/8"	0.40 kg	87.10	87.10
36.813	1-groove	18 mm	1"	0.50 kg	92.30	92.30
36.814	1-groove	22 mm	1 1/8"	0.83 kg	111.00	111.00
36.815	2-groove	18 mm	1 1/4"	0.53 kg	130.00	130.00
36.817	1-groove	26 mm	1 3/8"	1.79 kg	160.00	160.00
36.818	1-groove	22 mm	1"	0.60 kg	119.00	119.00
36.819	1-groove	26 mm	1 1/2"	0.98 kg	136.00	136.00
36.820	2-groove	22 mm	1 1/2"	0.94 kg	157.00	157.00
36.825	2-groove	22 mm	1 3/4"	0.98 kg	208.00	208.00
36.826	1-groove	27 - 30 mm	1 3/4"	1.20 kg	149.00	149.00
36.827	1-groove	24 mm	1 1/4"	0.82 kg	132.00	132.00
36.829D26	1-groove	26 mm	1 3/4"	2.67 kg	268.00	268.00
36.829D32	1-groove	32 mm	1 3/4"	2.67 kg	268.00	268.00

\*2 pieces are needed per shackle!

Other anchor rollers on request.

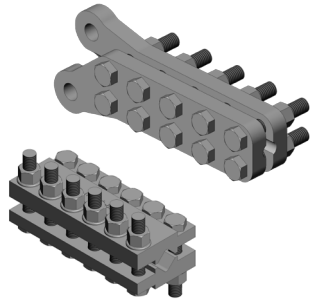
## Oval ring



The lacquered quality Crosby-Oval-Rings are predominantly used for one and two-strand hangers of chains and wire cables. For three and four-strand lifting accessories three-piece ring sets must be used, which you can obtain from on request.

Article no.	Type	b1 mm	b2 mm	d ø in mm	Load capacity	Weight	CHF	EUR
5454-01.86	Oval ring	127	63.5	12.7	1.86 t	0.20 kg	16.20	16.20
5454-02.5	Oval ring	152	76	16	2.50 t	0.50 kg	22.80	22.80
5454-03.9	Oval ring	140	70	19.1	3.90 t	1.02 kg	25.50	25.50
5454-09.21	Oval ring	178	89	25.4	9.21 t	2.77 kg	36.80	36.80
5454-13.3	Oval ring	222	111	31.8	13.3 t	5.44 kg	36.80	36.80
5454-18.1	Oval ring	267	133	38.1	18.1 t	8.44 kg	97.10	97.10
5454-23.6	Oval ring	305	152	44.5	23.6 t	11.40 kg	336.00	336.00

## Wyssen plate clamp

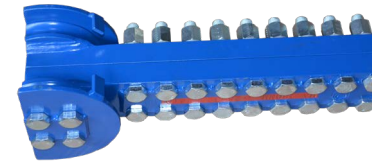


The Wyssen plate clamp functions as a guy clamp or security clamp. The anchor cable is fixed on both lugs with a shackle on each one.

The Wyssen plate clamp is also available without lugs, which was specially manufactured for the automatic Wyssen skyline clamp. This plate clamp functions to secure the steel wire cable and prevents slippage or movement of the outermost position for locked-coil cables.

Article no.	Type	Cable-ø	Weight	CHF	EUR
8.800D16	Wyssen 6t	16 mm	12.90 kg	714.00	714.00
8.800D20	Wyssen 6t	20 mm	12.90 kg	714.00	714.00
8.200D28-44	Wyssen without lobes, for automatic skyline clamp	28 - 44 mm	16.20 kg	871.00	871.00
8.200D38-52	Wyssen without lugs, for automatic skyline clamp	38 - 52 mm	28.00 kg	1'093.00	1'093.00

## Anchoring clamp



The anchoring clamp is used for holding and tensioning wire cables, such as e.g. installation of the skyline. The V-formed recess along the complete body enables a defined cable diameter range to be covered. The clamp is fastened to the attachment point with wire rope slings through the clamping tabs.

Important: Before using the anchoring clamp please refer to the instruction manual.

Article no.	Type	Max. tensioning force	Number bolts	Cable-ø	Length	Weight	CHF	EUR
5438D06-09	Steel	3 t	8	6 - 9 mm	24 cm	5.00 kg	on req.	on req.
5438D10-14	Steel	7 t	12	10 - 14 mm	31 cm	15.00 kg	on req.	on req.
5438D15-19	Steel	8 t	12	15 - 19 mm	34 cm	17.00 kg	on req.	on req.
5438D20-25	Steel	11 t	14	20 - 25 mm	36 cm	29.00 kg	on req.	on req.
5438D26-32	Steel	24 t	22	26 - 32 mm	56 cm	55.00 kg	on req.	on req.
5438D32-40	Steel	35 t	26	32 - 40 mm	71 cm	90.00 kg	on req.	on req.
5438D38-48	Steel	40 t	28	38 - 48 mm	76 cm	105.00 kg	on req.	on req.
5438D48-54	Steel	50 t	32	48 - 54 mm	88.5 cm	130.00 kg	on req.	on req.

Article no.	Type	Max. tensioning force	Number bolts	Cable-ø	Length	Weight	CHF	EUR
5438D10-14A	Alu	7 t	12	10 - 14 mm	30 cm	6.00 kg	on req.	on req.
5438D15-19A	Alu	8 t	12	15 - 19 mm	33 cm	7.00 kg	on req.	on req.
5438D20-25A	Alu	11 t	14	20 - 25 mm	35 cm	14.00 kg	on req.	on req.
5438D26-32A	Alu	24 t	22	26 - 32 mm	52 cm	22.00 kg	on req.	on req.
5438D32-40A	Alu	35 t	26	32 - 40 mm	71 cm	38.00 kg	on req.	on req.
5438D38-48A	Alu	40 t	28	38 - 48 mm	76 cm	48.00 kg	on req.	on req.
5438D48-54A	Alu	50 t	32	48 - 54 mm	88.5 cm	54.00 kg	on req.	on req.

Ackja cable winch

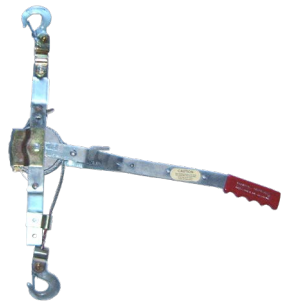


The Ackja cable winch is an extremely light cable winches, which is assembled on an Ackja (a sliding hull). Even in the roughest terrain the cable winch pulls itself to the operation site and can be used for a wide variety of applications. It is operated from a steering bar. The winch unit is driven by a chainsaw motor (Stihl MS 661).

Tractive force: 9 kN • average speed: 0.8 m/s (50 m/min) • engine power: 5.4 kw / 7.3 PS (9500 rpm) • cable capacity: ø 6.5 mm, length 100 m • length, breadth, height: 1900 x 520 x 440 mm

Article no.	Type	Weight	CHF	EUR
5760KMF422	Ackja-cable winch KMF 422 (incl. 100 m cable ø 6.5 mm)	approx. 100.00 kg	7'932.00	7'932.00

Maasdam cable puller



The extremely light and robust original Maasdam cable puller “made in USA” is available in the S6 version with single traction and the SB 6 with double traction. The original American device cannot be compared to Chinese imitation copies. With single traction a maximum pull length of 3.6 m is achieved, and with double traction 1.8 m. The cable puller is predominantly used in the cableway sector for installation, and primarily in pre-tensioning support guy wires.

Article no.	Type	Cable-ø	Traction length	Tractive force CE ANSI	Weight	CHF	EUR
5432S6	S6 with single traction	5 mm	3.6 m	454 kg 1'000 kg	3.50 kg	145.00	145.00
5432SB6	SB6 with double traction	5 mm	1.8 m	750 kg 2'000 kg	3.75 kg	217.00	217.00

Caution! In Europe the CE standards for tractive forces must be complied with. ANSI are the details according to the American national standard and are not valid in Europe!

Habegger Hit wire rope hoist



The high quality original Habegger wire rope hoist with alloyed light-metal housing is available for maximum tractive forces between 600 kg and 3200 kg. Overloading is protected by means of shear pin and a suitable cable designed for the wire rope hoist offers maximum safety. The Habegger wire rope hoist is used world-wide in the widest applications, and also in the cableway sector. We also offer upgrading for the hydraulic drive.

Article no.	Type	Traction	Cable-ø	Weight	CHF	EUR
5431H06	Hit 6 with lever, without cable	600 kg	6.4mm	4.80 kg	537.00	537.00
5431H06D6.4X10	Hit 6 with lever, 10 m cable, hook, sling ø6.4 mm x 1 m, without reel	600 kg	6.4mm	7.70 kg	617.00	617.00
5431H10	Hit 10 with lever, without cable	1'000 kg	8.4mm	7.70 kg	682.00	682.00
5431H10D8.4x20	Hit 10 with lever, 20 m cable, hook, with reel	1'000 kg	8.4mm	14.00 kg	827.00	827.00
5431H16	Hit 16 with lever, without cable	1'600 kg	11.2mm	13.70 kg	953.00	953.00
5431H16D11.2X20	Hit 16 with lever, 20 m cable, hook, with reel	1'600 kg	11.2mm	23.20 kg	1'180.00	1'180.00
5431H32	Hit 32 with lever, without cable	3'200 kg	16.2mm	23.00 kg	1'430.00	1'430.00
5431H32D16.2X20	Hit 32 with lever, 20 m cable, hook, with reel	3'200 kg	16.2mm	43.30 kg	1'842.70	1'842.70



Cable winch W-40 with Unimat circular drive



## Mainline for Habegger manually operated wire rope hoist



The mainline for the Habegger manually operated wire rope hoist is specially manufactured to ensure the highest degree of safety. The cables are available with a thimble and an eyelet load hook with a safety latch at one end and at the other end with a point to push through the device.

Article no.	Type	Cable-ø	Length	Weight	CHF	EUR
5511D6.4X10M	Hit 6	6.4 mm	10 m	2.90 kg	120.20	120.20
5511D6.4X20M	Hit 6	6.4 mm	20 m	4.50 kg	154.20	154.20
5511D6.4X30M	Hit 6	6.4 mm	30 m	6.10 kg	188.20	188.20
5511D8.4X10M	Hit 10	8.4 mm	10 m	3.80 kg	146.30	146.30
5511D8.4X20M	Hit 10	8.4 mm	20 m	6.30 kg	201.80	201.80
5511D8.4X30M	Hit 10	8.4 mm	30 m	8.80 kg	257.30	257.30
5511D8.4X40M	Hit 10	8.4 mm	40 m	11.30 kg	312.90	312.90
5511D11.2X10M	Hit 16	11.2 mm	10 m	5.40 kg	171.20	171.20
5511D11.2X20M	Hit 16	11.2 mm	20 m	9.50 kg	242.70	242.70
5511D11.2X30M	Hit 16	11.2 mm	30 m	14.60 kg	319.70	319.70
5511D11.2X40M	Hit 16	11.2 mm	40 m	18.70 kg	391.20	391.20
5511D11.2X50M	Hit 16	11.2 mm	50 m	22.80 kg	462.50	462.50
5511D11.2X60M	Hit 16	11.2 mm	60 m	26.90 kg	534.00	534.00
5511D11.2X80M	Hit 16	11.2 mm	80 m	31.00 kg	683.60	683.60
5511D11.2X100M	Hit 16	11.2 mm	100 m	44.20 kg	826.40	826.40
5511D16.2X10M	Hit 32	16.2 mm	10 m	11.30 kg	278.90	278.90
5511D16.2X20M	Hit 32	16.2 mm	20 m	20.30 kg	412.70	412.70
5511D16.2X30M	Hit 32	16.2 mm	30 m	30.20 kg	553.20	553.20
5511D16.2X80M	Hit 32	16.2 mm	80 m	88.00 kg	1'742.40	1'742.40
5511D16.2X100M	Hit 32	16.2 mm	100 m	105.00 kg	2'010.00	2'010.00

All prices include reel. On request also available without reel. Other lengths and versions are available on request.

## Habegger Hit-Trac power-driven hoists



The original Habegger Hit-Trac power-driven hoist offers the highest quality and safety thanks to its excellent materials, well thought-out construction and safety features. The Hit-Trac is available with a Stihl 2-stroke driving motor or an electric motor. The tractive speed of the Hit-Trac 8 is maximum 6 m/min and for the Hit-Trac 16 max. 10 m/min. All equipment is fitted with overload protection, so that highest degree of safety can be guaranteed.

Article no.	Type	Traction	Cable-ø	Weight	CHF	EUR
5431HT8-8.2	Hit-Trac 8B with Stihl 260 Motor	800 kg	8.2 mm	30.00 kg	6'927.00	6'927.00
5431HT16-11.2	Hit-Trac 16B with Stihl 2-stroke motor	1'600 kg	11.2 mm	44.00 kg	8'466.00	8'466.00
5431HT8-8.2E	Hit-Trac 16E with electric motor 1kW/230V	800 kg	8.2 mm	32.00 kg	7'956.00	7'956.00
5431HT16-11.2E	Hit-Trac 16E with electric motor 3kW/400V/6.8A	1'600 kg	11.2 mm	58.00 kg	8'466.00	8'466.00

## Traction cable for Habegger power-driven hoists

Article no.	Type	Cable-ø	Length	Weight	CHF	EUR
5512D8.2X30	Hit-Trac	8.2 mm	30 m	8.80 kg	257.30	257.30
5512D8.2X50	Hit-Trac	8.2 mm	50 m	13.80 kg	368.50	368.50
5512D8.2X80	Hit-Trac	8.2 mm	80 m	22.30 kg	540.70	540.70
5512D8.2X100	Hit-Trac	8.2 mm	100 m	27.30 kg	651.90	651.90
5512D8.2X150	Hit-Trac	8.2 mm	150 m	40.70 kg	937.50	937.50
5512D8.2X300	Hit-Trac	8.2 mm	300 m	90.00 kg	2'291.10	2'291.10
5512D11.2X30	Hit-Trac	11.2 mm	30 m	14.60 kg	319.70	319.70
5512D11.2X50	Hit-Trac	11.2 mm	50 m	22.80 kg	462.50	462.50
5512D11.2X80	Hit-Trac	11.2 mm	80 m	36.00 kg	683.60	683.60
5512D11.2X100	Hit-Trac	11.2 mm	100 m	44.20 kg	826.40	826.40
5512D11.2X150	Hit-Trac	11.2 mm	150 m	76.50 kg	1'703.90	1'703.90
5512D11.2X300	Hit-Trac	11.2 mm	300 m	138.00 kg	2'775.10	2'775.10

Other lengths on request Thimble/eyelet load hook at one end, pointed at the other end, with reel.

# Wyssen Avalanche Control Center

## WAC.3®

Innovative user interface  
for avalanche control



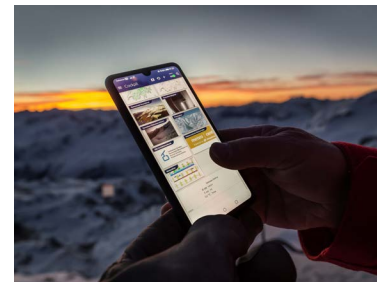
## Wyssen Avalanche Control AG

The Wyssen company has been building remote avalanche control systems since 1999. In 2009, the company Wyssen Avalanche Control AG was founded, which took over this business unit.

Within 5 years, Wyssen became the market leader in Switzerland, Austria and in Norway. Meanwhile, Wyssen Towers protect ski resorts, roads and mines in Canada, USA and Chile too.

The company sets the state-of-the-art technology and services in the branch, thanks to its innovative solutions. Examples for this are the new operating software WAC.3® for Avalanche Towers or the variety of avalanche detection systems, which are indisputably regarded today as state-of-the-art.

Wyssen Avalanche Control has installed over **800 Wyssen avalanche towers** and **100 detection systems** worldwide by 2023. The systems and software tools are operated via the WAC.3® information platform by **over 500 active users**.



**Safety** through **innovation**

**wyssen** switzerland **avalanche control**



# Small Cableway 100kg

The ideal solution for short distances and small loads

The Wyssen small cableway is ideally suited for transporting baggage or building material to remotely situated mountain, club or holidays homes. The maximum cableway length is 100 m. The carriage is very light with 34 kg and its simple and uncomplicated construction makes it very inexpensive. The cableway is suitable for skyline cable diameters of Ø up to 9 mm. The drive unit is a small electric winch that works at an operating voltage of 230 V. Operation is simple and uncomplicated with a switch directly on the winch, which can optionally be supplied with radio remote control. In the case of convex terrain, supports with a suspension cable saddle can also be built. Transporting people on the small cableway is strictly prohibited.

Technical Data	
Loading deck dimensions	75 x 52 x 25 cm
Load capacity	100 kg
max. cableway length	70 or 100 m



# Wyssen sheave block

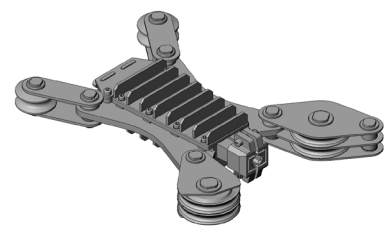
The tried and tested Wyssen sheave block offers the highest degree of safety when pulling and tensioning wire cables, if high tractive forces are necessary. The promatized sheave blocks have 2 to 6 rollers (4 to 12-fold traction) and are available for load capacities up to 60 tonnes. The robust and light sheave blocks are all fitted with ball-bearings mounted aluminium rollers (except Article 6.100, which is equipped with slide bearings/grease nipple).

	Article no.	Type	n-fold traction	Load cap.	Cable-ø	Roll ø	Weight /pc	CHF / pc	EUR / pc
	6.500_2	2-rollers	4-fold	6 t	12 mm	120 mm	13.00 kg	1'558.00	1'558.00
	6.600_2	2-rollers	4-fold	10 t	16 mm	138 mm	22.00 kg	2'198.00	2'198.00
	6.700_2	2-rollers	4-fold	20 t	22 mm	240 mm		4'608.00	4'608.00
	6.500_3	3-rollers	6-fold	9 t	12 mm	120 mm	17.00 kg	2'025.00	2'025.00
	6.600_3	3-rollers	6-fold	15 t	16 mm	138 mm	29.00 kg	2'889.00	2'889.00
	6.700_3	3-rollers	6-fold	30 t	22 mm	240 mm		6'058.00	6'058.00
	6.500_4	4-rollers	8-fold	12 t	12 mm	120 mm	22.00 kg	2'669.00	2'669.00
	6.600_4	4-rollers	8-fold	20 t	16 mm	138 mm	39.00 kg	3'786.00	3'786.00
	6.700_4	4-rollers	8-fold	40 t	22 mm	240 mm		7'941.00	7'941.00
	6.500_5	5-rollers	10-fold	15 t	12 mm	120 mm	26.00 kg	3'132.00	3'132.00
	6.600_5	5-rollers	10-fold	25 t	16 mm	138 mm	46.00 kg	4'497.00	4'497.00
	6.700_5	5-rollers	10-fold	50 t	22 mm	240 mm		9'431.00	9'431.00
	6.500_6	6-rollers	12-fold	18 t	12 mm	120 mm	30.00 kg	3'634.00	3'634.00
	6.600_6	6-rollers	12-fold	30 t	16 mm	138 mm	54.00 kg	5'233.00	5'233.00
	6.700_6	6-rollers	12-fold	60 t	22 mm	240 mm	215.00 kg	10'979.00	10'979.00
	6.400	4-rollers	8-fold	10 t	12 mm	various	13.00 kg	1'781.00	1'781.00
	6.100	6-rollers	12-fold	12 t	12 mm	various	24.00 kg	2'205.00	2'205.00





Automatic skyline clamp



The automatic skyline clamp is used predominantly for rapid and secure tensioning of skylines. It may be used for most types of steel wire cables, of  $\varnothing$  12 mm to 60 mm with a maximum tension capacity of up 48 t. Clamping is automatically effected, without any elaborate bolting. Clamping jaws are available for different cable diameters and all types can be exchanged. For odd cable diameters the next largest size of clamp diameter must be used.

\*corresponds max. tensioning force

Article no.	Type	Tension capacity*	Weight	CHF	EUR
25.500BC	BC (2-piece set)	8 t	60.50 kg	6'239.00	6'239.00
25.500A	A	8 t	24.50 kg	2'278.00	2'278.00
25.500B	B	8 t	28.10 kg	2'866.00	2'866.00
25.500C	C	8 t	32.50 kg	3'376.00	3'376.00
25.520	clamping jaws (price/piece)	8 t	4.00 kg	326.00	326.00

The clamping jaws are available for cable- $\varnothing$  12/14/16/18/20 mm and for type BC/A/B/C inclusive. Tensioning cable- $\varnothing$  max. 12 mm

Article no.	Type	Tension capacity*	Weight	CHF	EUR
25.350A	A (without clamping jaws)	12 t	29.00 kg	2'251.00	2'251.00
25.350B	B (without clamping jaws)	12 t	35.00 kg	3'097.00	3'097.00
25.350C	C (without clamping jaws)	12 t	42.00 kg	3'836.00	3'836.00
25.304	clamping jaws (price/piece)	12 t	7.38 kg	487.00	487.00

The clamping jaws are available for cable- $\varnothing$  16/18/20/22/24/26/28/30/32 mm. Tensioning cable- $\varnothing$  max. 12 mm

Article no.	Type	Tension capacity*	Weight	CHF	EUR
25.200BC	BC (2-piece set)	22 t	199.00 kg	17'111.00	17'111.00
25.200A	A	22 t	85.00 kg	6'713.00	6'713.00
25.200B	B	22 t	94.00 kg	8'243.00	8'243.00
25.200C	C	22 t	105.00 kg	8'869.00	8'869.00
25.215	clamping jaws (price/piece)	22 t	16.00 kg	1'425.00	1'425.00

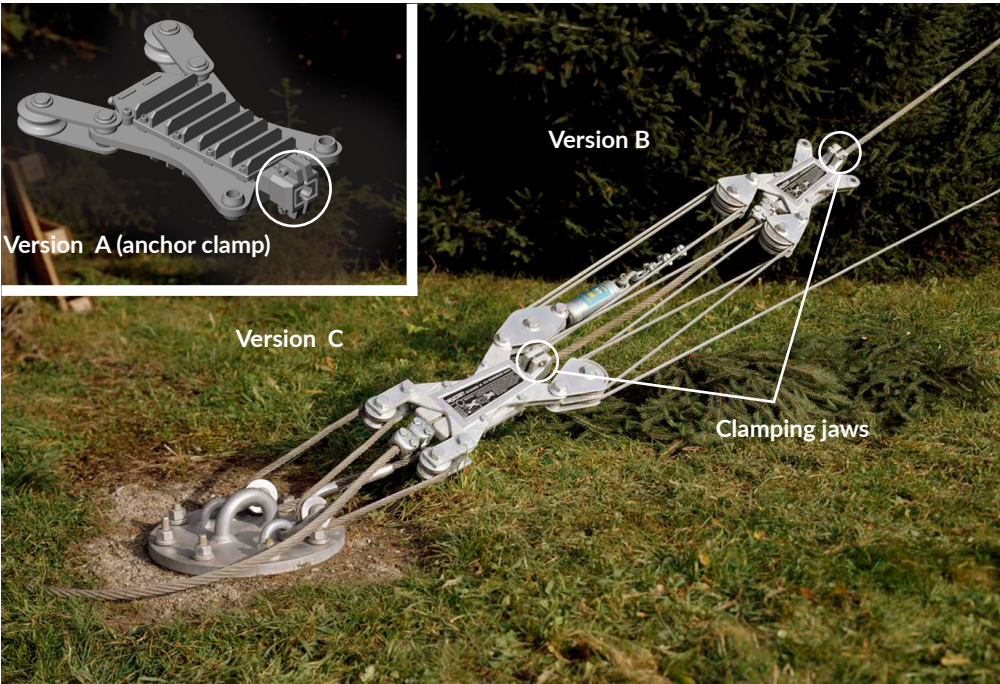
The clamping jaws are available for cable- $\varnothing$  20/22/24/26/28/30/32/34/36/38/40/42/44 mm and for type BC/A/B/C inclusive. Tensioning cable- $\varnothing$  max. 16 mm

Article no.	Type	Tension capacity*	Weight	CHF	EUR
25.2200BC	BC (2-piece set)	32 t	208.00 kg	21'744.00	21'744.00
25.2200A	A	32 t	86.00 kg	8'243.00	8'243.00
25.2200B	B	32 t	98.00 kg	10'268.00	10'268.00
25.2200C	C	32 t	110.00 kg	11'478.00	11'478.00
25.215	clamping jaws (price/piece)	32 t	16.00 kg	1'425.00	1'425.00

The clamping jaws are available for cable- $\varnothing$  20/22/24/26/28/30/32/34/36/38/40/42/44 mm and for type BC/A/B/C inclusive. Tensioning cable- $\varnothing$  max. 16 mm

Article no.	Type	Tension capacity*	Weight	CHF	EUR
25.400BC	BC (2-piece set)	48 t	625.00 kg	42'543.00	42'543.00
25.400A	A	48 t	255.00 kg	16'642.00	16'642.00
25.400B	B	48 t	295.00 kg	20'173.00	20'173.00
25.400C	C	48 t	330.00 kg	22'371.00	22'371.00
25.415	clamping jaws (price/piece)	48 t	34.00 kg	2'922.00	2'922.00

The clamping jaws are available for cable- $\varnothing$  40/42/44/46/48/50/52/54/56/58/60 mm and for type BC/A/B/C inclusive. Tensioning cable- $\varnothing$  max. 22 mm



For application on several cableways, a special type A skyline clamp is available, which then can be used on the respective cableway as an anchor clamp. A set consisting of A, B and C can be used with this for two cableways. For the tensioning device, we offer various types of tension measuring instruments in addition to the suitable rock-anchor plate. See the following page.

Electronic tension measurement device Wyssen



Electronic Tensioning-Device-Shakle

The Wyssen electronic tension measurement device has been specially manufactured for the Wyssen automatic skyline clamp. The skyline cable tension is measured in the tensioning cable at the tension gauge shackle during tensioning. Using the tension gauge with load measuring pins the effective value is measured directly (no multiplication necessary) in the automatic skyline clamp. The device is delivered with 10 m of cable for reading off from a distance. The measurement can be permanently read off outside the danger zone and with the measuring pins during tensioning and also during operation.

Article no.	Type	Load capacity	Weight	CHF	EUR
25.300M	Wyssen electronic tension measurement device for 12 t skyline clamp	12 t	12.00 kg	7'148.00	7'148.00
25.200M	Wyssen electronic tension measurement device for 22 t skyline clamp	22 t	12.00 kg	7'148.00	7'148.00
25.2200M	Wyssen electronic tension measurement device for 32 t skyline clamp	32 t	12.00 kg	7'148.00	7'148.00
25.1050	Electronic Tensioning-Device-Shakle 7/8", incl. cable roll, 10 m cable, measuring- and display device	6.5 t	4.42 kg	2'615.00	2'615.00



Electronic tension measurement device with measuring pins.

PIAB tension measurement device



The PIAB tension measurement device is amongst other things used with the automatic skyline clamp. The analogue measuring instrument needs no batteries. The measurement is made in the tensioning cable; therefore the multiplication factor of the sheave block must always be taken into account. The measurement may only be carried out when at a standstill. The PIAB tension measurement device is delivered with a shackle and a wooden box

Article no.	Type	Load capacity	Weight	CHF	EUR
5430-1	PIAB	1 t	3.50 kg	on request	on request
5430-2	PIAB	2 t	11.00 kg	on request	on request
5430-3	PIAB	3 t	11.00 kg	on request	on request
5430-5	PIAB	5 t	19.50 kg	on request	on request
5430-10	PIAB	10 t	34.15 kg	on request	on request

Wyssen compass



The Wyssen compass has been specially developed for work in rough terrain and thanks to its very steep vision predominantly used in the mountains for the construction of cableways etc. For measuring out cableway routes, the Wyssen compass continues to be indispensable! The instrument permits measurements of horizontal and vertical angles as well as azimuths and is very well suited for levelling work. The compass is delivered in the standard version with the compass casing 400g (Gon), but is also available on request at the same price with 360°.

Article no.	Type	Weight	CHF	EUR
5215MI4007-OK_400G	Wyssen-Universalcompass 400g without inclinometer	0.38 kg	952.00	952.00
5215MI4007	MI-4007, with built-in inclinometer	0.38 kg	1'267.00	1'267.00
5215MS8001	Suspension device for screwing into wood	0.06 kg	90.70	90.70
5215MS8002	Suspension device for clamping onto range poles	0.09 kg	128.00	128.00
5215MB9901_400G	Compass casing incl. ring MK2001.2	0.01 kg	86.40	86.40
5219-2.5	Jalon PVC, Einteilung 50 cm, 2.5 m	1.10 kg	35.00	35.00

We are your disposal for any repairs and spare parts.



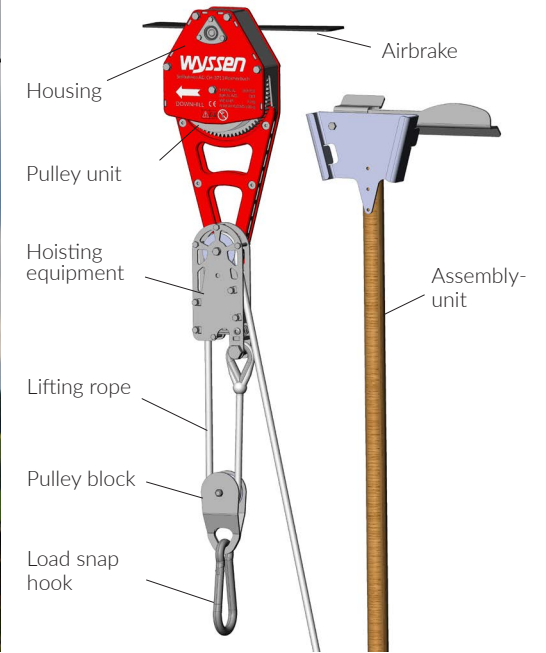
# Skymule - Plantation Cableway

The environmentally friendly transport solution for your plantation

The low cost Wyssen Skymule is ideal for transport downhill in steep terrain. Thanks to its simple, fast and flexible design, the Skymule enables efficient and speedy transport over steep terrain.

## Advantages

- Unlimited cableway length possible
- Fast and simple assembly and removal
- Any number of supports can be assembled
- High productivity -> several loads can be transported simultaneously
- Max. Load capacity: 100 kg
- Skymule only weighs 4.5 kg -> easy to carry
- Environmentally friendly: No operating power/motor necessary, transport is by gravity
- Speed control by wear-free propeller air brake
- Simple hoisting of the load by means of pulley block
- Loading and unloading can be carried out flexibly at any position
- Slow and controlled delivery to the valley



Skymule Movie: [www.youtube.com/wyssenseilbahnen](http://www.youtube.com/wyssenseilbahnen)





## Inclinometer



Inclinometers are used for measurements of heights and gradients as well as for levelling and measurements of distances. Due to its own weight the inclinometer always levels off absolutely vertically. In addition the MC 1004 is delivered with a small scale plate, in order to determine the approach to a wall. The two collimators have a multi-divided scale.

Article no.	Type	Weight	CHF	EUR
5216MC1004	Inclinometer MC 1004 with 2 magnifying glasses and scale	0.25 kg	340.00	340.00

## Topochaix terrain measurement device



The tried and tested light and compact thread measuring device is used for measuring the lengths of cableways. The thread is sufficient for measuring 2500 m and is biologically degradable. The leather case can be easily fastened to the belt. The counter unit can be reset by pressing a button.

Article no.	Type	Weight	CHF	EUR
5217	Topochaix belt with 2,500 m measurement thread	0.48 kg	226.00	226.00
5217S	Replacement cord 2,500 m	0.09 kg	13.50	13.50

## Multi-tree anchor



The multi-tree anchor is designed to distribute the skyline tension over several trees. If there are not enough strong anchor trees for conventional anchoring, the skyline can be anchored using the 12-fold multi-tree anchor with up to 7 trees and with the 4-fold anchor up to 3 trees. If the application is done correctly (wrapped around the tree just once) the tractive forces are distributed evenly over the tree anchors.

Article no.	Type	Max. Load capacity	guy line cable / skyline cable-ø	Weight	CHF	EUR
8.600	2.5 / 12-fold	12 t	max. ø 12mm / ø 28 mm	10.30 kg	1'906.00	1'906.00
8.600-6	2.5 / 6-fold	12 t	max. ø 12mm / ø 28 mm	11.30 kg	1'906.00	1'906.00
8.500	5 / 12-fold	33 t	max. ø 16 mm / ø 38 mm	25.00 kg	2'737.00	2'737.00
8.500-6	5 / 6-fold		max. ø 16 mm / ø 38 mm	25.00 kg	2'737.00	2'737.00
8.700	10 / 12-fold	32 t	max. ø 26 mm / ø 44 mm	on request	3'739.00	3'739.00
8.650	3-point skyline bracket, 4- fold	12 t	max. ø 28 mm / ø 28 mm	15.50 kg	2'243.00	2'243.00

## Cable tensioner



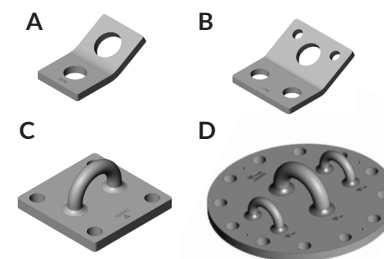
The cable tensioner is employed on the cable winch anchor cable. The anchor cable can be tensioned as desired with the adjusting screw and the cable winch aligned exactly. Correction and re-alignment of the cable winch is possible at any time with little effort.

Article no.	Type	for cable-ø	Weight	CHF	EUR
73.500	2.5	8 - 12 mm	4.93 kg	496.00	496.00



Cable tensioner

## Rock anchor plate

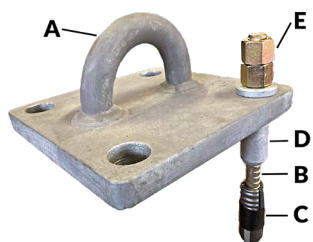


The rock anchor plates are used in good rock as anchors, such as e.g. for skyline, guy wires, etc. They are available with up to a maximum load capacity of 22 tonnes with "12 holes". With the Wyssen rock anchor system anchor sleeves are used, which also permit lateral traction on the anchor plate. Without sleeves the anchor plates serve at the same time as drilling jigs. Required accessories, such as anchor rods in various lengths, expansion heads and anchor sleeves are also available from us

Article no.	Type	Max. Load capacity	Weight	CHF	EUR
36.540B	(A) 1-hole	2.5 t	1.56 kg	111.00	111.00
36.535	(B) 2-hole	5 t	5.30 kg	183.00	183.00
36.530B	(C) 4-hole	5 t	9.89 kg	716.00	716.00
36.530A	(C) 4-hole	8 t	23.00 kg	816.00	816.00
36.525	(D) 8-hole	12 t	46.00 kg	1'473.00	1'473.00
36.520	(D) 12-hole	22 t	66.00 kg	2'283.00	2'283.00

You will find the corresponding anchor rods, expansion heads and anchor sleeves on the next page.

## Accessories for the rock anchor plate

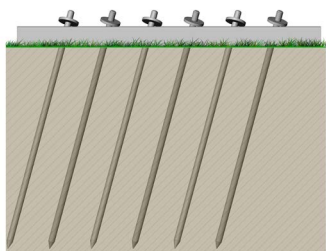


The anchor rods must be used in different lengths at any one time, so that the rock is stressed at different depths. The required expansion heads are also available for the anchor rods. The anchor sleeves serve to enable lateral traction to be applied to the anchor plate. Without anchor sleeves the anchor plate is used as a drilling jig. Anchor rods and anchor sleeves can be re-used after checking. The drill holes are drilled between 38 - 41 mm depending on the length of the anchor rod.

(A) Various anchor plates

Article no.	Type	Length	Weight	CHF	EUR
5472FAGL0.4	(B) Anchor rod ø20 (without nut)	0.4 m	1.00 kg	8.30	8.30
5472FAGL0.6	(B) Anchor rod ø20 (without nut)	0.6 m	1.50 kg	11.30	11.30
5472FAGL0.8	(B) Anchor rod ø20 (without nut)	0.8 m	2.00 kg	14.20	14.20
5472FAGL1.0	(B) Anchor rod ø20 (without nut)	1.0 m	2.50 kg	17.20	17.20
5472FAGL1.2	(B) Anchor rod ø20 (without nut)	1.2 m	3.00 kg	20.10	20.10
5472FAGL1.5	(B) Anchor rod ø20 (without nut)	1.5 m	3.75 kg	24.60	24.60
5472FAGL2.0	(B) Anchor rod ø20 (without nut)	2.0 m	5.00 kg	32.10	32.10
5472FAGL2.5	(B) Anchor rod ø20 (without nut)	2.5 m	6.25 kg	39.40	39.40
5472FAGL3.0	(B) Anchor rod ø20 (without nut)	3.0 m	7.50 kg	46.90	46.90
547120F63053	(C) Concrete-/Rock anchor 3-shell (Expanding Head)		0.40 kg	8.60	8.60
36.114B	(D) Anchor sleeve		0.88 kg	61.20	61.20
36.114BKD20	Anchor sleeve short for adhesive anchor		0.23 kg	42.60	42.60
547120F22030G	(E) Hexagon nut (replacement nut)		0.20 kg	7.00	7.00

## Wyssen titanium anchor



The Wyssen titanium anchor is delivered complete with 6 pins. In compact and good ground the anchor can be loaded with 1 to 3 tonnes. The titanium anchor is used predominantly in free terrain, where no other anchoring possibilities exist. It serves as an anchor for low loading, such as e.g. for small cable winches. The pins can be pulled out on the plate with the foot-operated winch. In the case of soft soil, several anchors can be coupled together.

Article no.	Type	Load capacity	Weight	CHF	EUR
36.1310A	Wyssen incl. 6 pins and shackle 5/8"	2 - 3 t	47.00 kg	843.00	843.00
36.1312	Pin 1 m, individual		5.00 kg	105.00	105.00

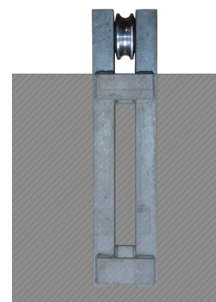
## Anchor bracket staple with cross-plate anchors



Anchor bracket staples for support guy lines with or without cross-plate are also available and depending on the type can be loaded up to 10 tonnes. For setting in concrete the anchor plates are used with cross-plates and without cross-plates for cementing into rock.

Article no.	Type	for shackle	Load capacity	Weight	CHF	EUR
36.660	ø 20 cm	1/2"	2 t	2.30 kg	111.00	111.00
36.661	ø 25 cm	5/8"	3 t	5.20 kg	183.00	183.00
36.662	ø 30 cm	3/4"	5 t	9.30 kg	288.00	288.00
36.663	ø 35 cm	7/8"	8 t	13.50 kg	377.00	377.00
36.664	ø 40 cm	1"	10 t	17.50 kg	469.00	469.00

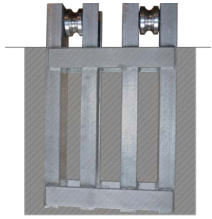
## Anchor brackets for concrete anchors



The finished anchor brackets are used for concrete anchors, which are available in various sizes up a load capacity of 48 tonnes. Plans for the concrete foundation (concrete quality P 300) are also included.

Article no.	Type	Load capacity	Weight	CHF	EUR
36.610	telephone cable anchor	3 t	6.20 kg	761.00	761.00
36.615	Balloon cable anchor	6 t	on request	on request	on request
36.620	2.5	12 t	43.00 kg	1'308.00	1'308.00
36.630	5	24 t	86.00 kg	2'511.00	2'511.00
36.640	10	48 t	on request	3'697.00	3'697.00

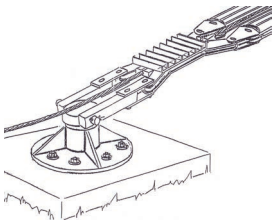
## Anchor brackets for automatic skyline clamp



Special anchor brackets are also available for the automatic skyline clamps, which depending on the type can be used for a maximum load capacity of 48 tonnes. Plans for the concrete foundations are also included.

Article no.	Type	Load capacity	Weight	CHF	EUR
36.625	2.5	12 t	37.00 kg	1'265.00	1'265.00
36.635	5	24 t	88.00 kg	2'452.00	2'452.00
36.645	10	48 t	on request	5'173.00	5'173.00
36.636	10 with additional skyline anchor	48 t	350.00 kg	7'200.00	7'200.00

## Rotatable anchor



The rotatable anchor (star-patterned anchoring system) can be swivelled horizontally 360° and vertically 45°. This enables cable lines to be laid out in any direction from the anchoring point. The 8-hole anchor is bolted onto rock or a concrete base.

Article no.	Type	Load capacity	Weight	CHF	EUR
36.100	2.5	12 t	105.00 kg	4'882.00	4'882.00
36.225	5	20 t	210.00 kg	12'031.00	12'031.00

## Wire rope cutter



Wire rope cutting made easy. The combination of ratchet and long handholds makes it possible to cut wire ropes with little effort. Face-ground and especially hardened blades made out of high-quality tempered steel. Blades can be unlocked in any cutting position. Impact resistant laminated and hardened handholds.

Article no.	Type	Flexible wire ropes	Compressed wire ropes	Weight	CHF	EUR
5240SCSZ20	SCSZ20	max. ø 20 mm	max. ø 16 mm	1.90 kg	431.00	431.00
5240SCSZ30	SCSZ30	max. ø 30 mm	max. ø 25 mm	5.30 kg	589.00	589.00

## Splicing tool



The splicing tool is available either as a complete set or individually. In the following list you can see all that is required for splicing a steel wire cable and everything that is contained in the splicing tool case.

Article no.	Type	contained in case	Weight	CHF	EUR
38.100	Splicing tool case with contents up to cable ø 24 mm		13.00 kg	2'386.00	2'386.00
38.115	Round splicing pin ø 18 mm / 550 mm	1 pc	0.92 kg	193.00	193.00
38.120	Round splicing pin ø 12 mm / 260 mm	2 pcs	0.20 kg	122.00	122.00
38.125	Flat splicing pin 320 mm	1 pc	0.43 kg	207.00	207.00
38.130	Flat iron with hole ø 8 and 10 mm	2 pc	0.39 kg	34.20	34.20
38.135	Offset splicing pin ø 8 mm	1 pc	0.08 kg	175.00	175.00
38.140	Offset splicing pin ø 15 mm	1 pc	0.30 kg	237.00	237.00
5240-30900	Stranded wire stretching device for max. cable ø 16 mm / stranded wire-ø 5.5 mm	1 pc	1.50 kg	617.00	617.00
5240C16	Felco cable cutters C-16	1 pc	2.30 kg	379.00	379.00
5240C7	Felco cable cutters C-7	1 pc	0.32 kg	70.40	70.40
5211G2	Folding ruler 2m	1 pc	0.13 kg	10.10	10.10
5240B230	Pincers 230 mm	1 pc	0.43 kg	12.40	12.40
5240G250	Locking pliers 250 mm	1 pc	0.06 kg	33.60	33.60
5241-01	Mounting knife	1 pc	0.07 kg	18.00	18.00
5245-2	Copper hammer 1 kg	1 pc	1.03 kg	64.80	64.80
5266-01	pair of working gloves	1 pc	0.19 kg	5.80	5.80
5267-10	Insulating tape 20 m	1 pc	0.04 kg	3.50	3.50
5268-01	Hemp plait	3 pcs	0.12 kg	6.90	6.90
5269-01	Chalk	2 pcs	0.01 kg	1.30	1.30
5505-01	Roll of binding wire ø 2.5 x 25	1 pc	1.14 kg	12.40	12.40
5270-ETUI	Splicing tool case	1 pc	1.75 kg	54.70	54.70

All price details for one article each.



Angle grinder



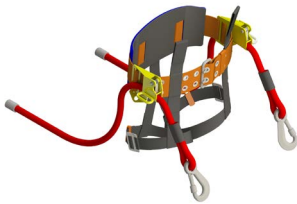
The angle grinder with a 2-stroke petrol motor is ideal for cutting steel wire cable and for re-sharpening the processor knife. The angle grinder delivery includes one article each of serrated grinding disc, grinding disc and cutting disc.  
2-Stroke single-cylinder motor/26 cc with 0.65 kW/tank volume 0.4l/mixing ratio 1:25/2500 rpm/pull starter/ disc diameter 180 mm.

Article no.	Type	Weight	CHF	EUR
5201WS0.65KW	Angle grinder with petrol motor	6.00 kg	335.00	335.00
5201FSD180	Serrated grinding disc	0.22 kg	11.40	11.40
5201SSD180	Grinding disc	0.22 kg	10.10	10.10
5201TSD180	Cutting	0.09 kg	6.90	6.90



Wyssen Safety belt 24.300BS

Wyssen safety belt



You receive from us the complete climbing equipment required for the safe ascent of trees. The tried and tested Wyssen safety belt with 2 ropes is specially constructed so that obstacles such as branches, cable guys etc. never have to be climbed over unprotected. The safety rope consists of a nylon braided steel cable, so that unintended cutting through is prevented. Damaged ropes are available in exchange.

Wyssen safety belt 24.300BS

Article no.	Type	Weight	CHF	EUR
24.300BS	2-Cable Wyssen Safety Harness (Climbing harness)  Waist harness made of nylon, width 80 mm, for body weights up to 100 kg, with leg loops, 2 clamp cases /safety latches, 2 reinforced special cables, continuously adjustable up to lengths of 3.1 m, including instruction manual.  Tested in compliance with SUVA (regulation EU2016/425)	4.00 kg	1'101.00	1'101.00
5580H	Hammer holster for Wyssen safety belt	0.08 kg	24.60	24.60
5580T	3-piece belt (braces)	0.09 kg	20.20	20.20

Wyssen climbing spikes



The climbing spikes are used for climbing trees of all types. With the cushioned leg protectors made of aluminium and the weatherproof synthetic straps, the highest degree of safety and comfort is guaranteed. The spikes are replaceable and are available as individual spare parts, as are all other parts.

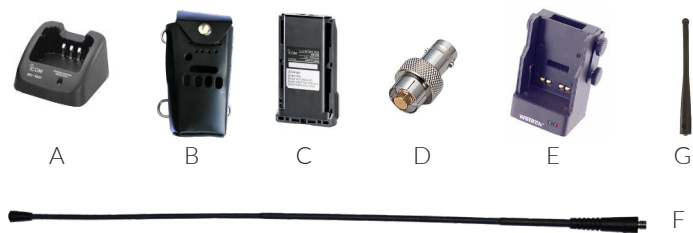
Article no.	Type	Weight	CHF	EUR
24.100	Wyssen climbing spikes Price per pair interchangeable spikes, aluminium leg protector weatherproof synthetic straps with strap eyelets for fixing on the spikes	3.86 kg	510.00	510.00

Icom Radio Telephone



All our radio-controlled carriages can be operated with the ICOM radio-telephone. In addition you can get all ICOM accessory parts from us individually.

The Icom IC-F34GS VHF radio telephone is no longer available. All accessories for the radio telephone is still available.



Article no.	Type	Weight	CHF	EUR
5420I-TL-BC160	(A) Desktop charger BC-160	0.35 kg	75.40	75.40
5420I-F34-3PT	(B) leather carrying case with 3-point belt (Wyssen)	0.24 kg	151.00	151.00
5420I-AKKU-BP232	(C) Replacement battery BP232 7.2V (1,900 mAh)	0.13 kg	127.00	127.00
5420I-BNC-AD-98F	(D) BNC Antenna adapter AD-98F	0.08 kg	33.60	33.60
5420WTC659	(E) KFZ-Charging cradle for F34 12/24 V	0.39 kg	320.00	320.00
5420Z-FSP2_H-MXTAIT	(F) Flex-antenna 430 mm for larger range	0.46 kg	84.80	84.80
5420I-FA-SC55V-2	(G) Antenna ICOM VHF-antenna	0.03 kg	22.50	22.50

**Remarks about ICOM radio equipment for carriage operation:**  
For customers who already possess ICOM mobile radios, for reasons of compatibility, we recommend using the same type of equipment.

**Advantages of the Icom F34 as opposed to Motorola GP340:**  
- Buttons for clamping and opening are large and can be easily operated when wearing gloves  
- Standard-battery 2,000 mAh  
- Leather carrying case on top closed over channel switch and volume control  
- Display with channel indicator

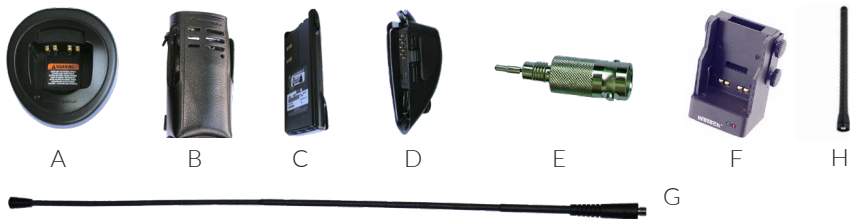
**Disadvantages of the Icom F34 as opposed to Motorola GP340:**  
- For the slack-puller the channel must be changed to switch off the motor

Motorola Radio Telephone



All our radio-controlled carriages can be operated with the Motorola radio-telephone. In addition you can get all Motorola accessory parts from us individually.

Article no.	Type	Weight	CHF	EUR
5420M-GP340-VHF-SET	Motorola GP340 VHF SET hand radio telephone, without display, without keypad, max. 16 channels, with antenna, with PMNN4151 battery 7.5 V (1,300 mAh), desktop charger, leather case with 3-point belt (Wyssen), incl. alignment and programming	2.12 kg	1'211.00	1'211.00



Article no.	Type	Weight	CHF	EUR
5420M-TL-MDHTN3001	(A) Desktop charger	0.88 kg	113.00	113.00
5420M-GP340-3PT	(B) leather carrying case with 3-point belt (Wyssen)	0.20 kg	151.00	151.00
5420M-PMNN4151	(C) Replacement battery PMNN4151 7.5 V (1,300 mAh)	0.22 kg	135.00	135.00
5420M-NF-HLN9716	(D) NF Adapter HLN 9716	0.02 kg	42.60	42.60
5420M-BNC-HL9756	(E) BNC Adapter HL 9756	0.08 kg	24.60	24.60
5420WTC620	(F) KFZ-Charging cradle for F34 12/24 V	0.39 kg	311.00	311.00
5420Z-FSP2_H-MXTAIT	(G) Flex-antenna 430 mm for larger range	0.46 kg	84.80	84.80
5420M-PMAD4015	(H) Antenna Motorola VHF 14cm (155-174MHz)	0.03 kg	22.50	22.50

**Remarks about Motorola radio equipment for carriage operation:**  
For customers who already possess Motorola mobile radios, for reasons of compatibility, we recommend using the same type of equipment.

**Advantages of the Motorola GP340 as opposed to Icom F34:**  
- To stop the motor of the slack-puller, the orange button next to the antenna is pressed, without changing the channel.

**Disadvantages of the Motorola GP340 as opposed to Icom F34:**  
- Buttons for clamping and opening are relatively small  
- Leather carrying case on top open over channel switch and volume control  
- No display

## Headphones and microphone for radio



For both Motorola and ICOM radio equipment you can get suitable headphones and microphones from us.  
Other Peltor products on request.

Article no.	Type	Weight	CHF	EUR
5420P-MT74H52A-111	Headset Peltor with microphone (without cable) 3M	0.61 kg	318.00	318.00
5420P-HT52A-112	Headset Peltor without microphone (without cable) 3M, Headset Listen Only	0.61 kg	153.00	153.00
5420P-FLX2-32	3M™ PELTOR™ Flex 2 cable, suitable for Motorola GP340	0.06 kg	90.80	90.80
5420P-FLX2-202	3M™ PELTOR™ Flex 2 cable, suitable for Icom F34	0.06 kg	56.90	56.90

## Wyssen fan articles

Article no.	Type	Weight	CHF	EUR
5990-HUT	Wyssen hat	0.09 kg	15.70	15.70
5990-LONGSLEEVE	Wyssen-Longsleeve, sizes S, M, L, XL, XXL	0.09 kg	20.20	20.20
5990-MESSERWSR	Wyssen knife	0.07 kg	16.60	16.60



## Orders

**Wyssen Seilbahnen AG**  
3713 Reichenbach i.K.  
Schweiz

Tel.: +41 (0) 33 676 76 76

info@wyssen.com  
www.wyssen.com

Opening hours:  
07.30am - 12.00am  
13.15pm - 17.00pm

**Wyssen Austria GmbH**  
6020 Innsbruck  
Österreich

Tel.: +43 512 2193 4600

austria@wyssen.com  
www.wyssen.com

**Wyssen Online Shop**  
<https://shop.wyssenseilbahnen.com>



Wyssen-movies on Youtube:  
[youtube.com/wyssenseilbahnen](https://youtube.com/wyssenseilbahnen)

Our general terms and conditions of sale are valid. All information is given without any guarantee. Subject to change without prior notice. Prices are subject to change without notice. All CHF price details are valid in Swiss Francs ex factory. VAT not included. Prices in EUR are reference values and are based on the the current exchange rate. The currently used EUR rate can be found on our homepage

<https://shop.wyssenseilbahnen.com>

1.00



# Swiss Made since 1926



## **Wyssen Seilbahnen AG**

3713 Reichenbach i.K.  
Schweiz

Tel.: +41 (0) 33 676 76 76

[info@wyssen.com](mailto:info@wyssen.com)  
[www.wyssen.com](http://www.wyssen.com)

## **Wyssen Austria GmbH**

6020 Innsbruck  
Österreich

Tel.: +43 512 2193 4600

[austria@wyssen.com](mailto:austria@wyssen.com)  
[www.wyssen.com](http://www.wyssen.com)

### **Important Notice to Wyssen Seilbahnen AG Products in this Brochure:**

No binding offer, we reserve the right to enter or refuse to enter into an agreement, and to make changes of our products without prior notice. All technical information is for reference only. The pictures and diagrams do not always represent the original versions of machinery and equipment. Equipment, instruction and protection of staff handling the products are the exclusive responsibility of the owner/user of the product.

Wyssen Seilbahnen AG does not accept liability of any kind, be it for direct or consequential damages (including, but not limited to, loss of profits, business and/or risks or damages to goodwill) arising as a consequence of reliance or only partial reliance upon any information herein provided by Wyssen Seilbahnen AG. The owner/user is responsible for determining the suitability of the products for their intended use and its compliance with the current regulations in force in the country of use. For our customers, our General Terms of Contract and Delivery are applicable; they are available on our website.