



Small Cableway 100kg

The ideal solution for short distances and small loads

The Wyssen small cableway is ideally suited for transporting baggage or building material to remotely situated mountain, club or holiday homes. The maximum cableway length is 100 m. The carriage is very light with 34 kg and its simple and uncomplicated construction makes it very inexpensive. The cable car is suitable for skyline cable diameters of \varnothing up to 9 mm. The drive unit is a small electric winch that works at an operating voltage of 230 V. Operation is simple and uncomplicated with a switch directly on the winch, which can optionally be supplied with radio remote control. In the case of convex terrain, supports with a suspension cable saddle can also be built. Transporting people on the small cableway is strictly prohibited.

Small Cableway

All prices in this product data sheet are exclusive of VAT.

1a) Drive with chain suspension

The especially light drive runs on 2 plastic rollers, different containers can be attached to the 4 chains. The drive can also cross over supports with skyline support saddles.

| | |
|---------------------|--|
| Item No.: | 370.100 Carriage |
| Max. Load Capacity: | 100 kg |
| Dead weight: | 17 kg |
| Includes: | <ul style="list-style-type: none"> - chain suspension including 4 chains and 6 shackles - cable lock suitable for pull cable Item No. 5449-5 |

1b) Loading bridge

The lightly built and robust aluminum carriage is attached to the drive on the four chains.

| | |
|---------------------|-----------------|
| Item no.: | 370.400 |
| Max. Load Capacity: | 100 kg |
| Loading deck: | 75 x 52 x 25 cm |
| Dead weight: | 17 kg |



Wyssen Seilbahnen AG

Tel: +41 33 676 76 74

E-Mail: info@wyssen.com

www.wyssen.com

WYSSSEN
switzerland • **seilbahnen**

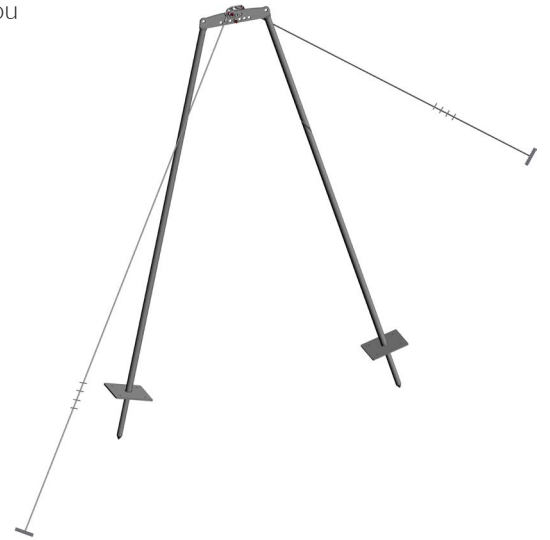
2a) Complete support

The support can be inserted into soft ground (meadow) and anchored using guy ropes. Two ground anchors are used for anchoring, which are hammered into the ground. You can also encase the support into concrete.

| | |
|------------------------|---|
| Item No.: | 360.620 |
| Support height: | 3 m |
| Cable height: | 2.5 m |
| Max. support pressure: | 500 kg |
| Weight: | 60 kg |
| Includes: | <ul style="list-style-type: none">- 2x guy ropes \varnothing 8 mm x 12 m (item no. 360.651)- 2x ground anchor (item no. 360.650)- 2x shackle 1/2" (item no. 5445-02)- 8x U-clamp terminals (item no. 5442D08) |

Not included: Suspension cable saddle

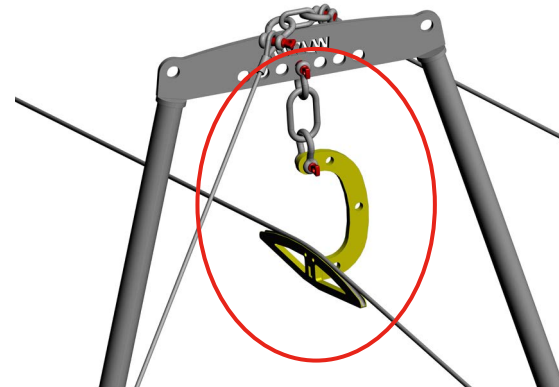
All listed individual components are available as spare parts.



2b) Suspension saddle

The cable saddle is used to hold up the cable and is suspended from the support. You can hang the cable saddle on various types of supports (e.g. wooden masts, trees or other steel masts).

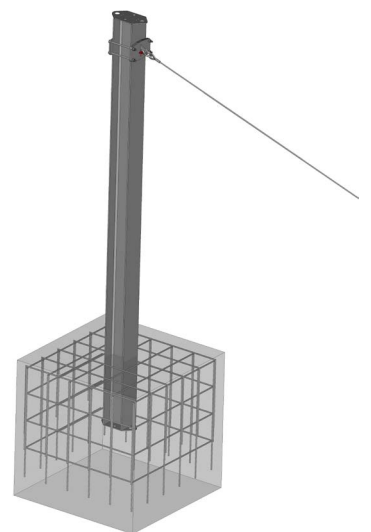
| | |
|----------------------|--|
| Item No.: | 50.333.101 |
| Max. Cable diameter: | 8.4 mm |
| Max. load: | 500 kg |
| Weight: | 3.5 kg |
| Includes: | <ul style="list-style-type: none">- 2x shackle 1/2" (item no. 5445-2)- 1x oval ring (item no. 5454-01.86) |



3a) End mast

The hot-dip galvanized end mast is concreted into a foundation. Can be used on the valley side or on the mountain side. On the mountain side, the electric drive (optional) is mounted directly on the end mast. Instead of end masts, a wide variety of anchorages such as walls, trees, rocks, large stones, etc. can be used. The suspension cable is tensioned and clamped (secured) directly to the end mast using a Habegger wire rope hoist (optional).

| | |
|--------------------------------|--|
| Item No.: | 370.801-EM |
| Max. suspension cable tension: | 1000 kg |
| Weight: | 120 kg |
| Includes: | <ul style="list-style-type: none">- 1x anchor roller (item no. 36.804)- 1x 1/2" shackle (item no. 5445-2) |



Concrete fundament not included
(must be made by a local construction company)
according to Wyssen foundation instructions

Wyssen Seilbahnen AG

Tel: +41 33 676 76 74

E-Mail: info@wyssen.com

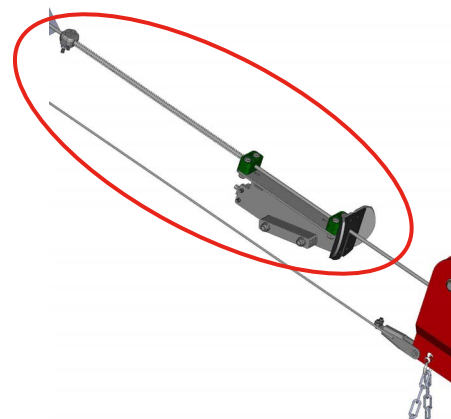
www.wyssen.com

Wyssen switzerland **seilbahnen**

3b) End buffer for end mast

The end buffer is mounted on the end mast on the mountain side and is used for automatic stopping when retracting from the drive. The end buffer is strongly recommended when using remote control or when the loading and unloading position is close to the end mast.

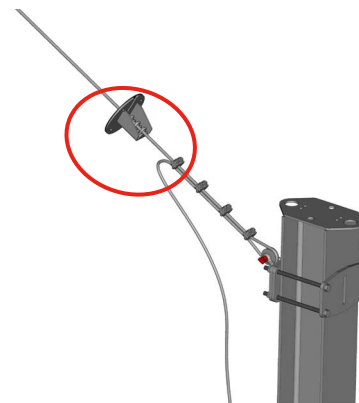
Item No.: 370.710
Weight: 5 kg
Includes: electrical wiring



3c) End buffer on valley side

The end buffer on the valley side is used to stop at the exact desired loading position. The end buffer is clamped to the cable (no automatic stop).

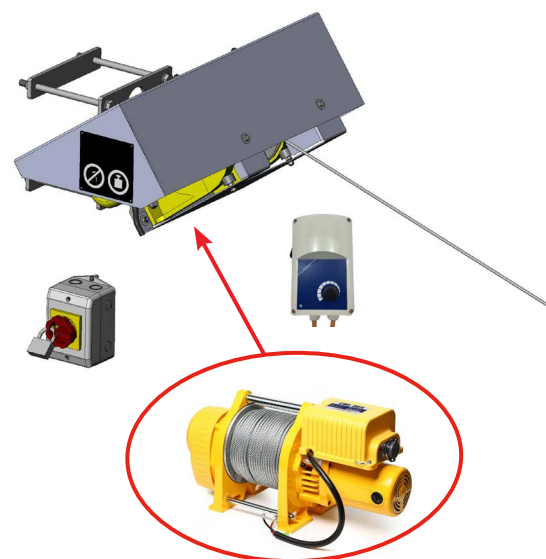
Item No.: 370.750
Weight: 1.5 kg



4a) Electric winch

The electric winch is used to pull the drive. The cable winch is fixed to the end mast on the mountain side. You can also mount it to a wall. The cable winch includes a cover and a mounting flange, the electrical installation with the main switch and an electronic speed controller for smooth starting and braking. The main switch can optionally be equipped with a padlock. The cable winch can be easily operated using the cable control (ascent/descent).

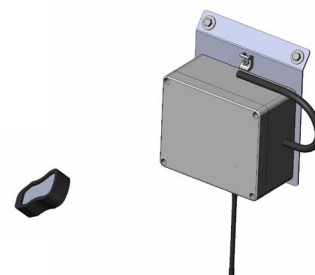
Item No.: 370.200
Motor: 11 A / 230 VAC
Speed: 16 m/min (1st layer/drum core)
25 m/min (outer layer/full drum)
Max. cable capacity: 71 m (with cable Ø 5mm)
Max. tension: 300 kg
Weight: 43 kg



4b) Remote control for electric winch

A remote control is optionally available for the electric winch. The radio control is attached and wired to the drive. When driving with radio control, the end buffer 3b must be mounted.

Item No.: 370.200-FS
Max. range: 70 m (with line of sight)
Includes: mounting plate



Wyssen Seilbahnen AG

Tel: +41 33 676 76 74

E-Mail: info@wyssen.com

www.wyssen.com

4c) Pull Cable

Traction cable to winch electric. The cable is rolled up on the drum.

| | |
|-------------------------|--------------------|
| Item No.: | 5509D05-6X19UFC |
| Cable diameter: | 5 mm |
| Cable length: | 71 m |
| Design: | 6x19+FC galvanized |
| Min. breaking strength: | 13.6 kN (1'360 kg) |



5) Suspension Cable

The Habegger wire rope hoist is used as suspension cable, which can also be tensioned directly using the Habegger wire rope hoist.

| | |
|-------------------------|--|
| Item No.: | 370.TS-D8.4X70M |
| Cable diameter: | 8.4 mm |
| Cable length: | 70 m |
| Design: | 6x19+FC galvanized |
| Min. breaking strength: | 50 kN (5000 kg) |
| Includes: | <ul style="list-style-type: none">- 4x bow clamps (item no. 5442D08)- 2x shackles 1/2" (item no. 5445-02)- 1x anchor pulley (item no. 36.804)- 1x duplex clamp (item no. 5444D09)- 1x cable reel |



Assembly Material

6a) Wire rope hoist - Habegger HIT-10

Used to tension the suspension cable. When using Wyssen end mast, the wire rope hoist is mounted directly on the end mast.

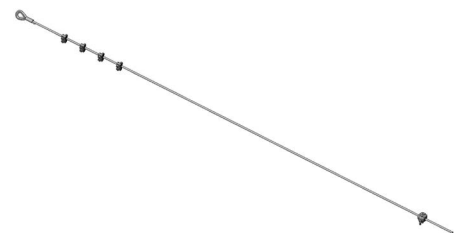
| | |
|---------------|--------------------------------|
| Item No.: | 5431H10 |
| Remarks: | Including lever, without cable |
| Max. tension: | 1000 kg |
| Weight: | 7.7 kg |



6b) Cable assembly aid

Used to tension the suspension cable using the Habegger wire rope hoist. The Habegger wire rope hoist can be removed after tensioning.

| | |
|-----------|---|
| Item No.: | 370.MHS-D8.4X05M |
| Weight: | 2 kg |
| Includes: | <ul style="list-style-type: none">- 4x bow clamps (item no. 5442D08)- 1x duplex Clamp (item no. 5444D09) |



6c) Round sling 2t - 1m (green)

For tensioning the Habegger wire rope hoist at the end mast. Used if the suspension cable is not tensioned directly with the wire rope hoist.

Item No.: 5540-02NL01.0

Max. load: 2t / 20kN



6d) Additional assembly material

Shackles, slings, rope clips or rolls available as required. Pricing on request

Anchoring material

7a) Titan ground anchor

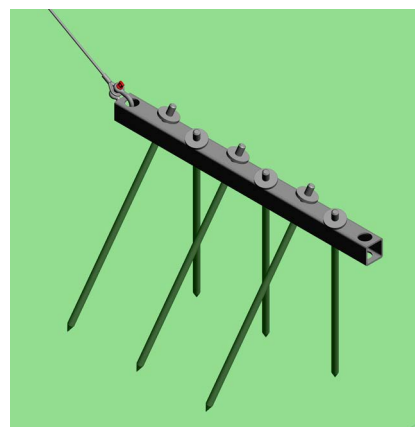
The Titan ground anchor is an option for anchoring the suspension cable in compact soil (meadow), instead of end masts. The spikes are buried in the ground using mallets. The anchorage can be removed at any time.

Item No.: 36.1310A

Includes: 6x spikes and shackles 5/8"

Max. tension: 1'000 - 3'000 kg, depending on soil properties

Weight: 40 kg



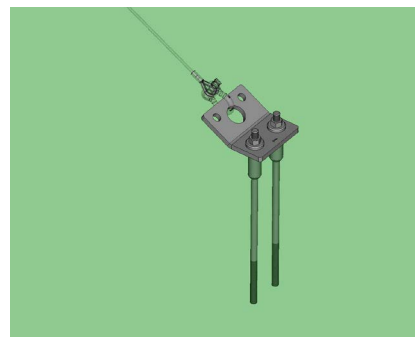
7b) Anchor plate

The Wyssen anchor plate can also be used to anchor the suspension cable, which is screwed onto concrete foundations or rock/stone using expansion sleeves.

Item No.: 36.534-0.4-0.4

Includes: 2x anchor rods, anchor sleeves and expansion sleeves

Weight: 10 kg



8) Installation

At the customer's request, we also carry out the installation of the small cableway in Switzerland.

Please note that the foundations, see item 3a, cannot be offered by Wyssen. These must be built by a local construction company following the Wyssen foundation instructions.

Passenger transport is prohibited!



Wyssen Seilbahnen AG

Tel: +41 33 676 76 74

E-Mail: info@wyssen.com

www.wyssen.com

Wyssen
switzerland • **seilbahnen**

Wyssen Small Cableway System

